



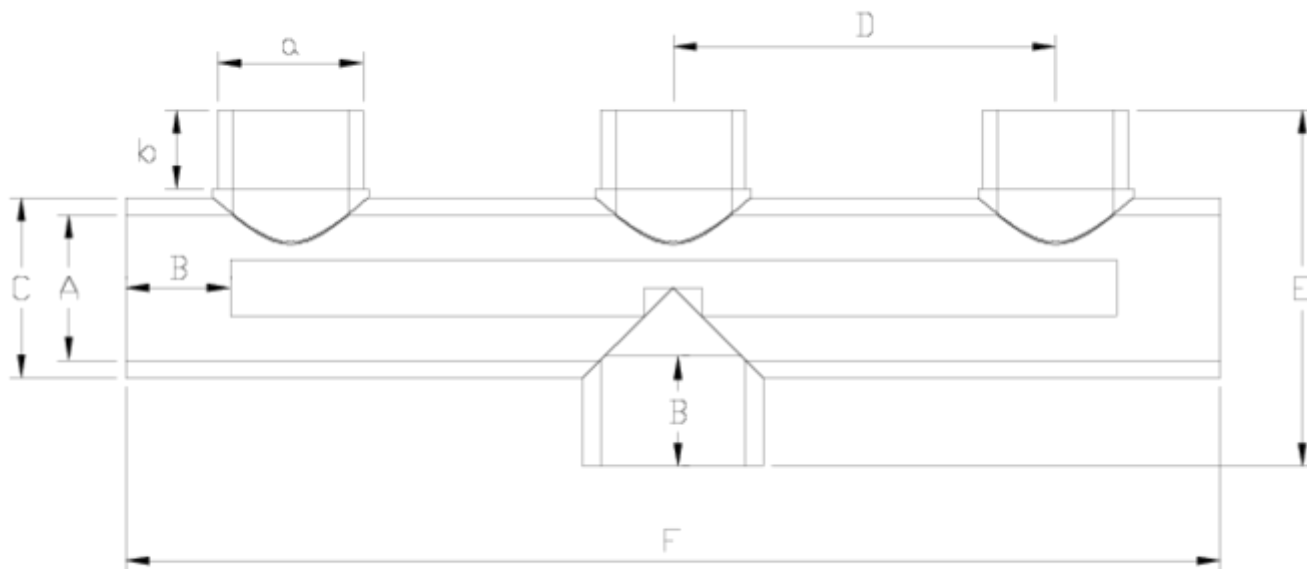
## PVC-U pressure fittings

# 3 way manifold

### ITEM 409

REFERENCE	DESCRIPTION	Net weight	Volumen (m <sup>3</sup> )	Gross weight	Unidades lote
1001269	PVC MANIFOLD 32 - GREY	0,38003	0,01553	4,245	10
1001270	PVC MANIFOLD 50 - GREY	0,800775	0,01553	3,585	4
1001271	PVC MANIFOLD 63 - GREY	1,307375	0,04460	6,035	4
1001272	PVC MANIFOLD 50-63 - GREY	0,835675	0,01553	3,745	4
1001719	PVC MANIFOLD FEMALE-MALE 50	0,719275	0,03648	3,42	4
1001720	PVC MANIFOLD FEMALE-MALE 50-63	0,821	0,02244	3,786	4
1001721	PVC MANIFOLD FEMALE-MALE 63	1,291125	0,04460	5,97	4





## ITEM 409 | 3 way manifold

Código	a-A	Peso (g)	b	B	C	D	E	F	PN	MEDIDA
01269	32	470	22	22	40	115	88	308	PN16	MÉTRICO
01270	50	677	26	34	61	132	123	393	PN16	MÉTRICO
01272	50-63	725	26	38*	61	132	128	393	PN16	MÉTRICO
01271	63	1143	26	38	75	165	151	460	PN16	MÉTRICO
01719	50	707	26	34	61	132	123	424	PN16	MÉTRICO
01721	50-63	755	26	38*	61	132	128	424	PN16	MÉTRICO
01720	63	1188	26	38	75	165	151	498	PN16	MÉTRICO



## Product Documents



## Product Certificates



## Company Certificates

