

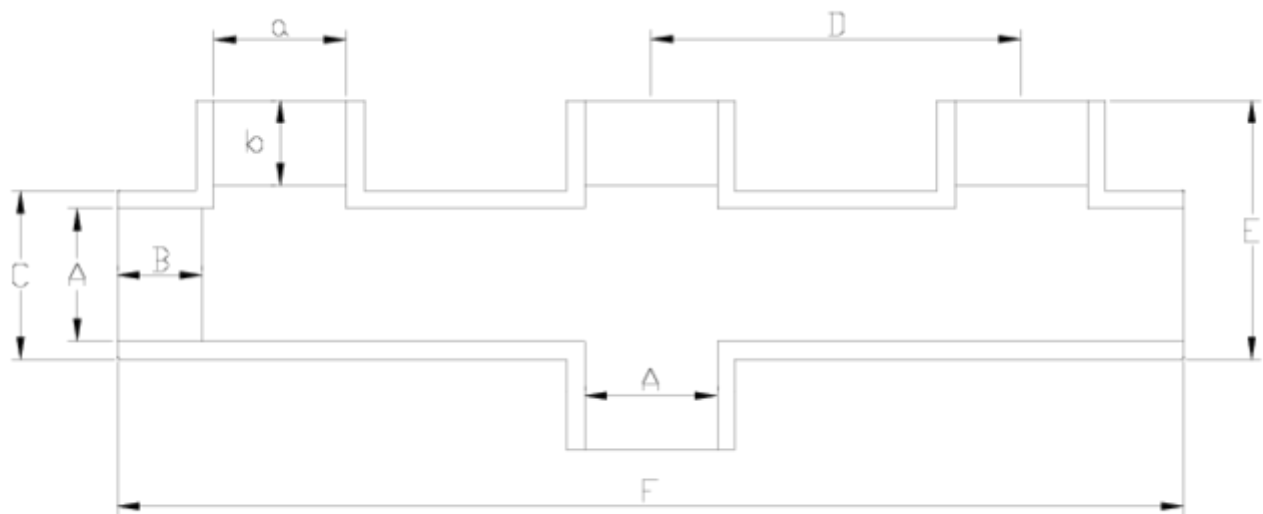


## PVC-U pressure fittings

# 3 way manifold female threaded ITEM 282

REFERENCE	DESCRIPTION	Net weight	Volumen (m <sup>3</sup> )	Gross weight	Unidades lote
1002383	PVC MANIFOLD FEMALE THREADED 1"-1" - GREY	0,63103	0,01553	6,755	10
1002385	PVC MANIFOLD FEMALE THREADED 2"-1 1/2" - GREY	1,734775	0,04460	7,669	4
1002386	PVC MANIFOLD FEMALE THREADED 2"-2" - GREY	1,79885	0,03648	7,865	4





## ITEM 282 | 3 way manifold female threaded

Código	A-a	Peso (g)	b	B	C	D	E	F	PN	ROSCA
02382	1" -1"	480	22	22	40	115	78	308	PN10	BSP
02385	2"-1 1/2"	1103	21	38	75	165	115	460	PN10	BSP
02386	2"-2"	1201	26	38	75	165	115	460	PN10	BSP



## Product Documents



## Product Certificates



## Company Certificates

