

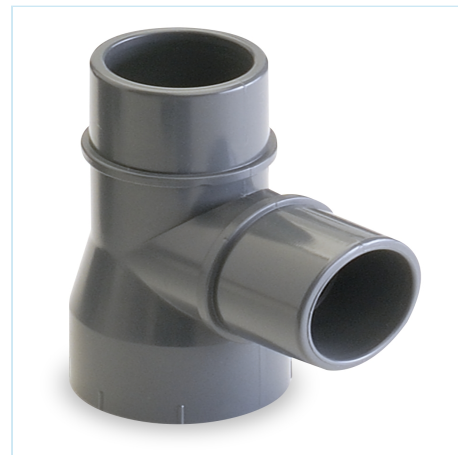


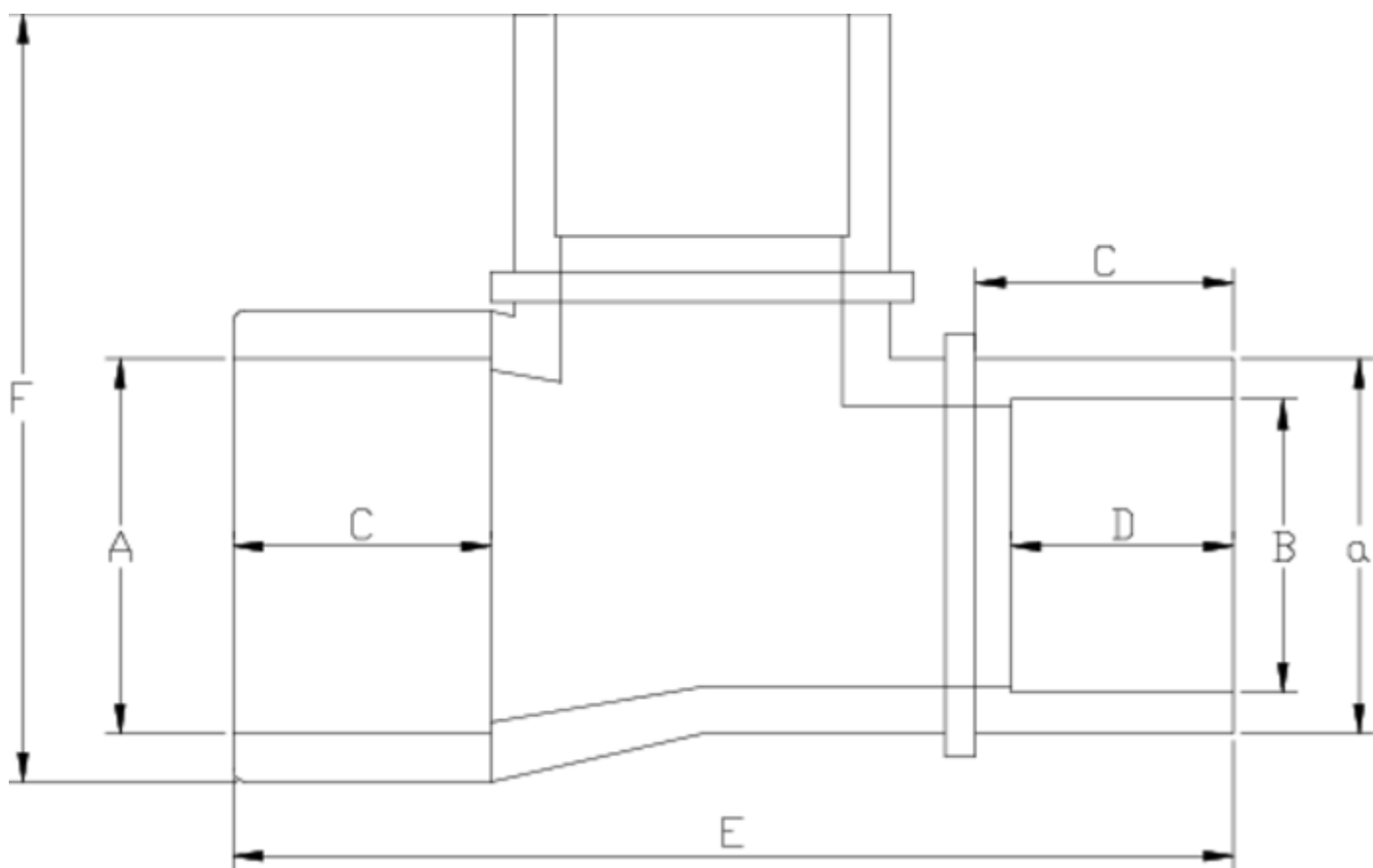
## PVC-U pressure fittings

# 90° tee female-male-male

## ITEM 202

REFERENCE	DESCRIPTION	Net weight	Volumen (m <sup>3</sup> )	Gross weight	Unidades lote
1001762	TEE 90° FEMALE-MALE-MALE 32X32X25	0,059247	0,02244	4,635	70
1001763	TEE 90° FEMALE-MALE-MALE 40X40X32	0,109823	0,03682	9,335	80
1001764	TEE 90° FEMALE-MALE-MALE 50X50X40	0,198434	0,04717	13,54	65
1001765	TEE 90° FEMALE-MALE-MALE 63X63X50	0,356005	0,06347	14,3582	38
1001766	TEE 90° FEMALE-MALE-MALE 75X75X63	0,50215	0,03682	6,575	12
1001767	TEE 90° FEMALE-MALE-MALE 90X75X90	0,8245	0,03129	5,52	6
1001768	TEE 90° FEMALE-MALE-MALE 110X110X90	1,507867	0,04717	9,95	6





## ITEM 202 | 90° tee female-male-male

CÓDIGO	A-a-B	PESO (g)	C	D	E	F	PN	MEDIDA
01762	32x32x25	61	22	19	85	66	PN16	MÉTRICO
01763	40x40x32	105	26	22	106	81	PN16	MÉTRICO
01764	50x50x40	180	31	26	125	99	PN16	MÉTRICO
01765	63x63x50	249	38	31	154	121	PN16	MÉTRICO
01766	75x75x63	450	45	38	180	143	PN16	MÉTRICO
01768	110x110x90	1460	61	51	250	179	PN16	MÉTRICO





## Product Documents



## Product Certificates



## Company Certificates

