



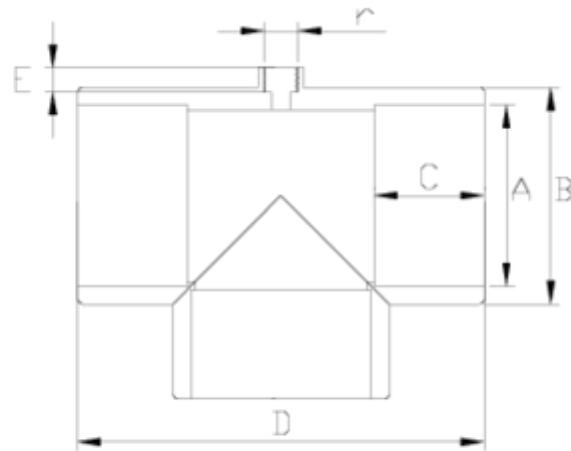
PVC-U pressure fittings

"Air" tee

ITEM 917

REFERENCE	DESCRIPTION	Net weight	Volumen (m ³)	Gross weight	Unidades lote
1001523	"AIR" 90° TEE SOLV. SOCKET 90-3/4"	0,97942	0,04717	10,436	10
1001524	"AIR" 90° TEE SOLV. SOCKET 90-1"	0.96762	0.04717	10.318	10
1001525	"AIR" 90° TEE SOLV. SOCKET 110-1"	1,732	0,06149	14,7765	8
1001526	"AIR" 90° TEE SOLV. SOCKET 125-1"	3,392	0,06347	17,79	5
1001531	"AIR" 90° TEE SOLV. SOCKET 160-2"	3,985	0,08677	12,58	3
1001532	"AIR" 90° TEE SOLV. SOCKET 200-2"	6,644	0,04717	7,28	1





ITEM 917 | "Air" tee

Código	A-r	Peso (g)	B	C	D	E	PN	MEDIDA
01525	110-1"	1465	131	61	238	22	PN16	MÉTRICO
01526	125-1"	2169	148	69	277	22	PN16	MÉTRICO
01531	160-2"	3668	182	86	348	38	PN10	MÉTRICO
01532	200-2"	6600	226	106	408	38	PN10	MÉTRICO



Product Documents



Product Certificates



Company Certificates

