

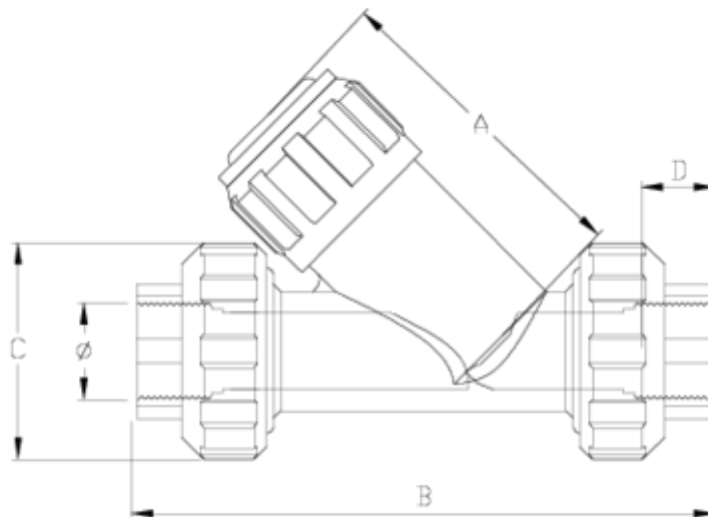


## Angle seat valves and filters

# Angle seat check valve, female threaded outlet - EPDM ITEM 527

REFERENCE	DESCRIPTION	Net weight	Volumen (m <sup>3</sup> )	Gross weight	Unidades lote
1021321	ANGLE SEAT CHECK V.,F. THREAD OUT. 1/2"	0,21533	0,00891	2,45	10
1021322	ANGLE SEAT CHECK V.,F. THREAD OUT. 3/4"	0,3941	0,01553	4,268	10
1021323	ANGLE SEAT CHECK V.,F. THREAD OUT. 1"	0,60483	0,01553	6,375	10





## ITEM 527 | Angle seat check valve, female threaded outlet - EPDM

CÓDIGO	f	DN	Peso (g)	A	B	C	D	PN	TIPO ROSCA
21321	1/2"	15	242.865	73	140	52	16	PN16	BSP
21322	3/4"	20	366.66	85	164	59	17	PN16	BSP
21323	1"	25	541.485	102	183	69	21	PN16	BSP



## Product Documents



## Product Certificates

## Company Certificates

