

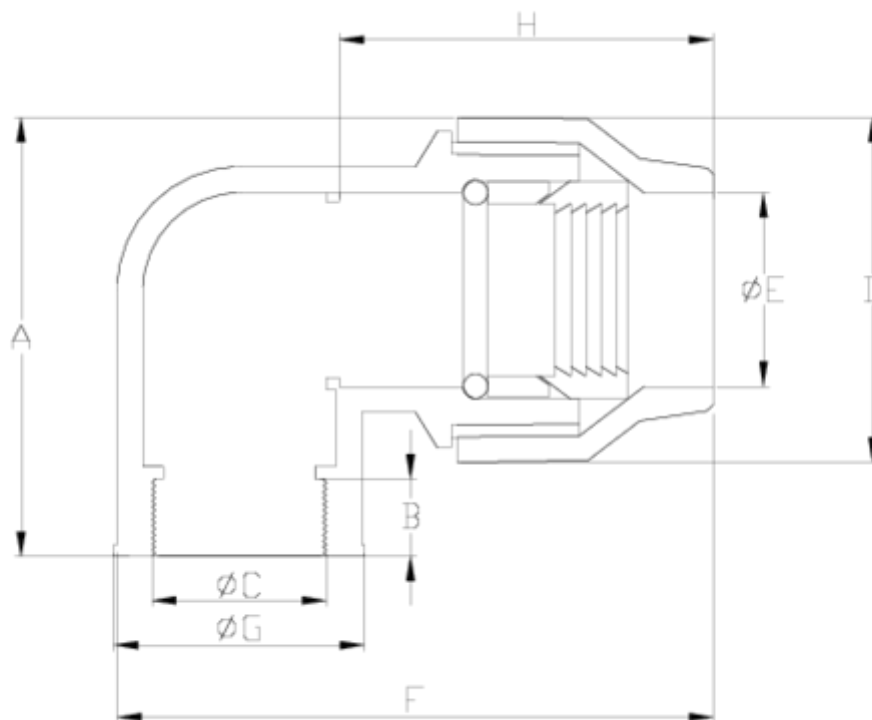


## Brass pressure fittings

# 90° coupling, female threaded ITEM 154

REFERENCE	DESCRIPTION	Net weight	Volumen (m <sup>3</sup> )	Gross weight	Unidades lote
1020066	90° BRASS ELBOW,F. THREAD 20-1/2"	0,1007	0,00892	5,22	50
1020067	90° BRASS ELBOW,F. THREAD 25-3/4"	0,1843	0,00892	7,189	40
1020068	90° BRASS ELBOW,F. THREAD 32-1"	0,2933	0,00892	7,52	25
1020069	90° BRASS ELBOW,F. THREAD 40-1 1/4"	0,4781	0,02244	17,7	36
1020070	90° BRASS ELBOW,F. THREAD 50-1 1/2"	0,7319	0,00892	8,97	12
1020071	90° BRASS ELBOW,F. THREAD 63-2"	1,06363	0,01553	10,963	10
1020072	90° BRASS ELBOW,F. THREAD 75-2 1/2"	1,802471	0,02244	13,105	7
1020073	90° BRASS ELBOW,F. THREAD 90-3"	2,95326	0,02244	15,254	5





## ITEM 154 | 90° coupling, female threaded

Código	f tubo-R	Peso (g)	A	B	C	D	E	F	G	H	PN	TIPO ROSCA
20066	20-1/2"	132	47.3	10.2	1/2"	35	21	53.6	24.5	33	PN25	BSP
20067	25-3/4"	213	50.5	12.7	3/4"	41.5	26	69	29.5	36.5	PN25	BSP
20068	32-1"	301	61	15.5	1"	49.5	33	78.5	38	43.5	PN25	BSP
20069	40-1 1/4"	520	74.8	16.7	1 1/4"	61	41.8	92	46.7	47.5	PN25	BSP
20070	50-1 1/2"	810	93	16	1 1/2"	74.3	51.2	107.5	56	53	PN25	BSP
20071	63-2"	1340	111	18	2"	91.2	64	137	66	65	PN25	BSP
20072	75-2 1/2"	1875	135	75	112.8						PN25	BSP
20073	90-3"	2720	154	85	129.4						PN25	BSP



## Product Documents



## Product Certificates

## Company Certificates

