



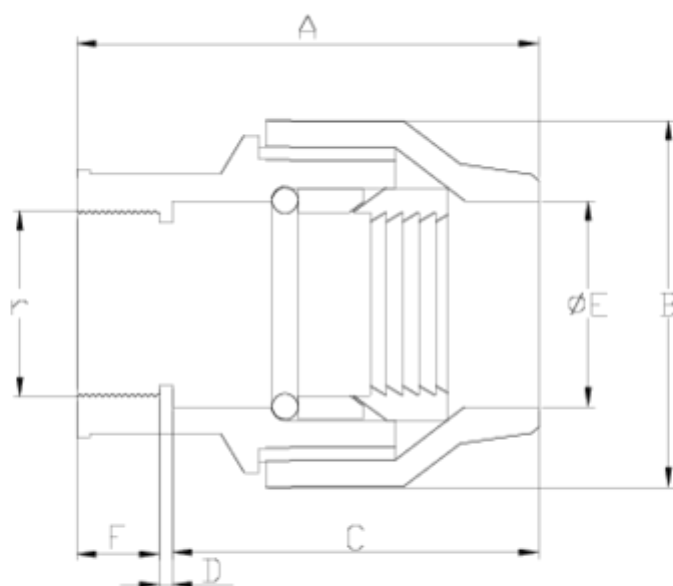
Brass pressure fittings

Straight coupling, female threaded

ITEM 151



| REFERENCE | DESCRIPTION | Net weight | Volumen (m ³) | Gross weight | Unidades lote |
|-----------|---------------------------------------|------------|---------------------------|--------------|---------------|
| 1020046 | BRASS STRAIGHT COUPL,F.THR. 20-1/2" | 0,0825 | 0,00473 | 5,065 | 60 |
| 1020047 | BRASS STRAIGHT COUPL,F.THR. 25-3/4" | 0,1308 | 0,00473 | 5,35 | 40 |
| 1020048 | BRASS STRAIGHT COUPL,F.THR. 32-1" | 0,2206 | 0,00892 | 6,805 | 30 |
| 1020049 | BRASS STRAIGHT COUPL,F.THR 40-1 1/4" | 0,3255 | 0,01553 | 14,975 | 45 |
| 1020050 | BRASS STRAIGHT COUPL,F.THR 50-1 1/2" | 0,546 | 0,00892 | 10,015 | 18 |
| 1020051 | BRASS STRAIGHT COUPL,F.THR. 63-2" | 0,9271 | 0,00892 | 5,75 | 6 |
| 1020052 | BRASS STRAIGHT COUPL,F.THR. 75-2 1/2" | 1,4729 | 0,00892 | 9,025 | 6 |
| 1020053 | BRASS STRAIGHT COUPL,F.THR. 90-3" | 2,2921 | 0,01553 | 9,495 | 4 |
| 1020054 | BRASS STRAIGHT COUPL,F.THR. 110-4" | 3,2738 | 0,00892 | 6,735 | 2 |



ITEM 151 | Straight coupling, female threaded

| Código | f tubo-R | Peso (g) | A | B | C | D | E | F | r | PN | TIPO ROSCA |
|--------|-----------|----------|------|------|-------|-----|------|------|--------|------|------------|
| 20046 | 20-1/2" | 100 | 44.5 | 35 | 32 | 2.5 | 21 | 10 | 1/2" | PN25 | BSP |
| 20047 | 25-3/4" | 159 | 51 | 41.5 | 36 | 2.5 | 26 | 12.5 | 3/4" | PN25 | BSP |
| 20048 | 32-1" | 213 | 60.3 | 49.5 | 42 | 2.3 | 33 | 16 | 1" | PN25 | BSP |
| 20049 | 40-1 1/4" | 369 | 66 | 61 | 47.7 | 1.8 | 41.8 | 16.5 | 1 1/4" | PN25 | BSP |
| 20050 | 50-1 1/2" | 586 | 67 | 74.3 | 50 | 1.3 | 51.2 | 15.7 | 1 1/2" | PN25 | BSP |
| 20051 | 63-2" | 1002 | 86.5 | 91.2 | 65 | 3.5 | 64 | 18 | 2" | PN25 | BSP |
| 20052 | 75-2 1/2" | 1469 | 135 | 88 | 99.8 | | | | | PN25 | BSP |
| 20053 | 90-3" | 2240 | 154 | 104 | 111.4 | | | | | PN25 | BSP |
| 20054 | 110-4" | 3345 | 179 | 129 | 145 | | | | | PN25 | BSP |



Product Documents



Product Certificates

Company Certificates

