



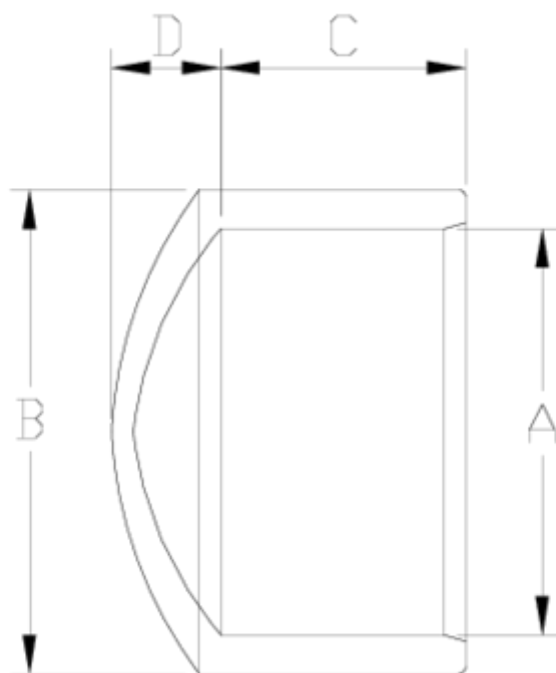
## PVC-U pressure fittings

# Cap solvent socket

## ITEM 024

REFERENCE	DESCRIPTION	Net weight	Volumen (m <sup>3</sup> )	Gross weight	Unidades lote
1001049	CAP, FEMALE 25	0,011529	0,00473	1,27	100
1001050	CAP, FEMALE 32	0,020576	0,00892	2,245	100
1001051	CAP, FEMALE 40	0,03922	0,00892	3,325	80
1001052	CAP, FEMALE 50	0,079979	0,02244	6,886	80
1001053	CAP, FEMALE 63	0,118384	0,02243	5,654	45
1001054	CAP, FEMALE 75	0,187243	0,02244	6,105	30
1001055	CAP, FEMALE 90	0,357906	0,02244	6,93	18
1001056	CAP, FEMALE 110	0,562209	0,02244	6,672	11
1001057	CAP, FEMALE 125	0,768413	0,02244	6,635	8
1001058	CAP, FEMALE 140	1,0966	0,03648	11,56	10
1001059	CAP, FEMALE 160	1,312	0,03648	11,09	8
1001060	CAP, FEMALE 200	2,074	0,06150	15,72	7
1001077	CAP, FEMALE 20	0,006299	0,00473	0,755	100
1001119	CAP, FEMALE 225	2,5323	0,02244	3,02	1
1001120	CAP, FEMALE 250	4,0023	0,02244	4,49	1
1001121	CAP, FEMALE 315	6,2223	0,04117	6,8627	1
1001145	CAP, FEMALE 16	0,003433	0,00473	0,656	150
1001314	CAP, FEMALE 180	3,154929	0,06150	23,005	7





## ITEM 024 | Cap solvent socket

Codigo	A	Peso (g)	B	C	D	PN	MEDIDA
01145	16	$\approx 0.0034 \cdot B^3 \cdot 2.5339$	22	15	6	PN16	MÉTRICO
01077	20	6	25	16	8	PN16	MÉTRICO
01049	25	13	32	19	9	PN16	MÉTRICO
01050	32	21	40	22	10	PN16	MÉTRICO
01051	40	39	50	26	12	PN16	MÉTRICO
01052	50	80	63	31	15	PN16	MÉTRICO
01053	63	121	75	38	17	PN16	MÉTRICO
01054	75	189	91	44	19	PN16	MÉTRICO
01055	90	320	111	51	23	PN16	MÉTRICO
01056	110	530	132	61	28	PN16	MÉTRICO



## ITEM 024 | Cap solvent socket

01057	125	718	148	69	32	<b>PN16</b>	MÉTRICO
01058	140	1061	168	76	36	<b>PN16</b>	MÉTRICO
01059	160	1254	186	86	40	<b>PN10</b>	MÉTRICO
01314	180	3130	225	106	46	<b>PN10</b>	MÉTRICO
01060	200	2005	225	106	46	<b>PN10</b>	MÉTRICO
01119	225	2475	252	119	50	<b>PN10</b>	MÉTRICO
01120	250	3180	282	131	60	<b>PN10</b>	MÉTRICO
01121	315	5630	357	164	70	<b>PN10</b>	MÉTRICO



## Product Documents



## Product Certificates



## Company Certificates

