



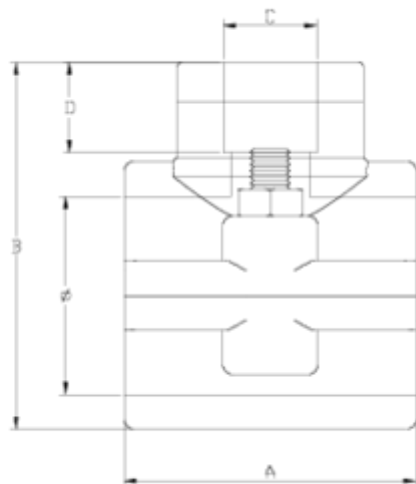
Clamp saddles

Reinforced clamp saddle 2 screws

ITEM 127



REFERENCE	DESCRIPTION	Net weight	Volumen (m ³)	Gross weight	Unidades lote
1003053	PP CLAMP SADDLE REINF. 25-1/2"	0,078216	0,03129	6,829	80
1003054	PP CLAMP SADDLE REINF. 25-3/4"	0,080966	0,02244	7,165	80
1003055	PP CLAMP SADDLE REINF. 32-1/2"	0,114788	0,02244	7,525	60
1003056	PP CLAMP SADDLE REINF. 32-3/4"	0,114455	0,02244	7,505	60
1003057	PP CLAMP SADDLE REINF. 40-1/2"	0,143366	0,03129	7,7413	50
1003058	PP CLAMP SADDLE REINF. 40-3/4"	0,140346	0,03129	7,5903	50
1003059	PP CLAMP SADDLE REINF. 40-1"	0,149846	0,03129	8,0653	50
1003060	PP CLAMP SADDLE REINF. 50-1/2"	0,133107	0,03129	6,5628	45
1003061	PP CLAMP SADDLE REINF. 50-3/4"	0,132884	0,02244	6,58	45
1003062	PP CLAMP SADDLE REINF. 50-1"	0,144662	0,03129	7,0828	45
1003124	PP CLAMP SADDLE REINF. 32-1"	0,139038	0,03129	8,98	60
1003149	PP CLAMP SADDLE REINF. 20-1/2"	0,084591	0,02244	7,455	80
1003150	PP CLAMP SADDLE REINFORCED 20-3/4"	0,086216	0,02244	7,585	80



ITEM 127 | Reinforced clamp saddle 2 screws

Código	f tubo - C	Peso (g)	A	B	D	PN	TIPO ROSCA
03149	20 - 1/2"	59	43	48	16	PN16	BSP
03150	20 - 3/4"	62	43	48	17	PN16	BSP
03053	25 - 1/2"	72	45	52	16	PN16	BSP
03054	25 - 3/4"	71	45	52	17	PN16	BSP
03055	32 - 1/2"	105	49	60	16	PN16	BSP
03056	32 - 3/4"	107	49	60	17	PN16	BSP
03124	32 - 1"	148	59	72	21	PN16	BSP
03057	40 - 1/2"	122	59	72	16	PN16	BSP
03058	40 - 3/4"	130	59	72	17	PN16	BSP
03059	40 - 1"	138	59	72	21	PN16	BSP



ITEM 127 | Reinforced clamp saddle 2 screws

03060	50 - 1/2"	135	52	81	16	PN16	BSP
03061	50 - 3/4"	135	52	81	17	PN16	BSP
03062	50 - 1"	147	52	81	21	PN16	BSP



Product Documents



Product Certificates

Company Certificates

