



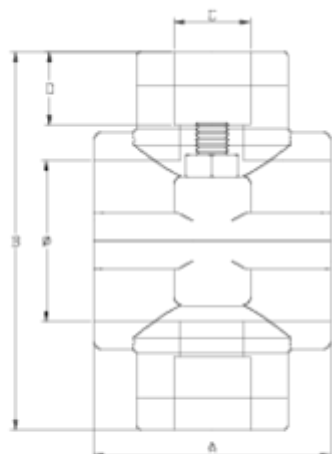
Clamp saddles

Reinforced double clamp saddle 2 screws

ITEM 133



REFERENCE	DESCRIPTION	Net weight	Volumen (m ³)	Gross weight	Unidades lote
1003126	PP DOUBLE CLAMP SADDLE REINF. 32-1"	0,1817	0,03129	11,03	60
1003153	DOUBLE CLAMP SADDLE, REINFORCED 20-1/2"	0,1165	0,03129	9,893	80
1003154	DOUBLE CLAMP SADDLE, REINFORCED 20-3/4"	0,1095	0,02244	9,3	80
1003300	PP DOUBLE CLAMP SADDLE REINF. 25-1/2"	0,1082	0,02244	9,1417	80
1003301	PP DOUBLE CLAMP SADDLE REINF. 25-3/4"	0,104404	0,02244	9,04	80
1003302	PP DOUBLE CLAMP SADDLE REINF. 32-1/2"	0,136455	0,03129	8,7603	60
1003303	PP DOUBLE CLAMP SADDLE REINF. 32-3/4"	0,141	0,02244	8,96	60
1003304	PP DOUBLE CLAMP SADDLE REINF. 40-1/2"	0,17419	0,03129	9,345	50
1003305	PP DOUBLE CLAMP SADDLE REINF. 40-3/4"	0,169	0,03129	9,472	50
1003306	PP DOUBLE CLAMP SADDLE REINF. 40-1"	0,183	0,03129	9,928	50
1003307	PP DOUBLE CLAMP SADDLE REINF. 50-1/2"	0,156551	0,03129	7,6178	45
1003308	PP DOUBLE CLAMP SADDLE REINF. 50-3/4"	0,154329	0,03129	7,5178	45
1003309	PP DOUBLE CLAMP SADDLE REINF. 50-1"	0,175	0,03129	8,68	45



ITEM 133 | Reinforced double clamp saddle 2 screws

Código	f tubo - C	Peso (g)	A	B	D	PN	TIPO ROSCA
03153	20 - 1/2"	82	43	63	16	PN16	BSP
03154	20 - 3/4"	88	43	63	17	PN16	BSP
03300	25 - 1/2"	98	45	71	16	PN16	BSP
03301	25 - 3/4"	95	45	71	17	PN16	BSP
03302	32 - 1/2"	131	49	84	16	PN16	BSP
03303	32 - 3/4"	138	49	84	17	PN16	BSP
03126	32 - 1"	194	59	92	21	PN16	BSP
03304	40 - 1/2"	160	59	92	16	PN16	BSP
03305	40 - 3/4"	167	59	92	17	PN16	BSP
03306	40 - 1"	183	59	92	21	PN16	BSP



ITEM 133 | Reinforced double clamp saddle 2 screws

03307	50 - 1/2"	159	52	100	16	PN16	BSP
03308	50 - 3/4"	165	52	100	17	PN16	BSP
03309	50 - 1"	188	52	100	21	PN16	BSP



Product Documents



Product Certificates

Company Certificates

