



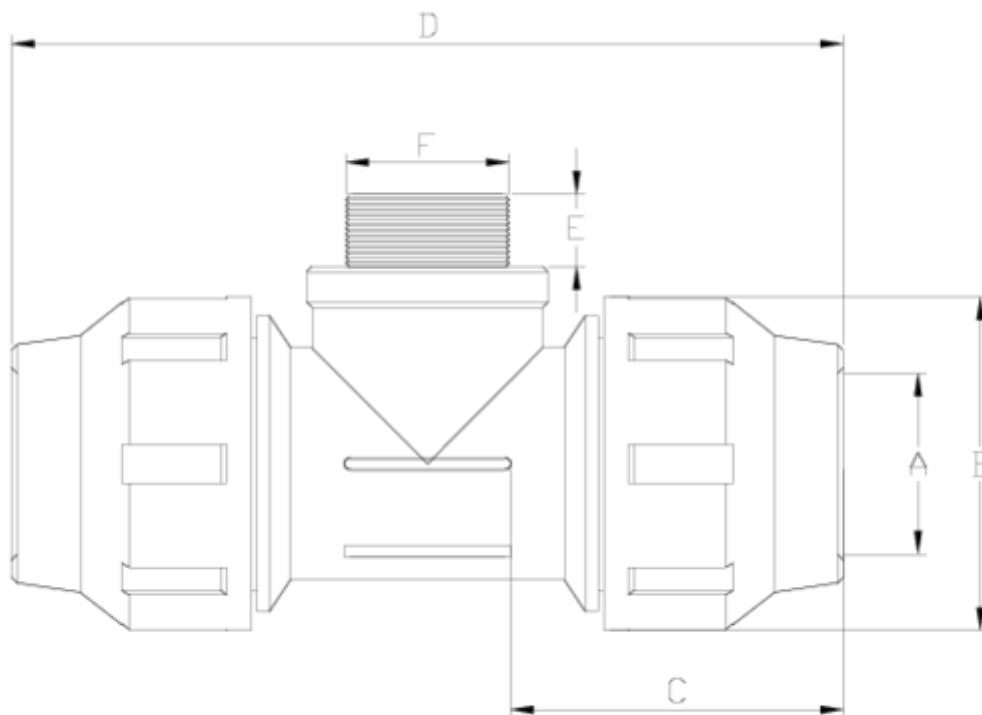
PP compression fittings

Tee, male threaded outlet

ITEM 486

REFERENCE	DESCRIPTION	Net weight	Volumen (m ³)	Gross weight	Unidades lote
112E100	TEE, MALE THREAD 20-1/2" GREY	0,097	0,04117	9,61	90
112E101	TEE, MALE THREAD 25-3/4" GREY	0,154	0,04717	11,54	70
112E102	TEE, MALE THREAD 32-1" GREY	0,218	0,03648	8,548	36
112E103	TEE, MALE THREAD 40-1 1/4" GREY	0,385	0,03682	10,245	25
112E104	TEE, MALE THREAD 50-1 1/2" GREY	0,57	0,04460	9,95	16
112E105	TEE, MALE THREAD 63-2" GREY	1,073	0,04717	11,49	10
112E106	TEE, MALE THREAD 75-2 1/2" GREY	1,797	0,06150	17,153	9
112E107	TEE, MALE THREAD 90-3" GREY	2,822	0,04836	12,128	4
112E108	TEE, MALE THREAD 110-4" GREY	4,366	0,04460	9,562	2
112E189	TEE, MALE THREAD 20-3/4" GREY	0,102	0,04117	10,06	90





ITEM 486 | Tee, male threaded outlet

Código	f tubo - F	Peso (g)	A	B	C	D	E	PN	TIPO ROSCA
12E100	20 - 1/2"	94	21	46	58	137	15	PN16	BSP
12E189	20 - 3/4"	96	21	46	58	137	16	PN16	BSP
12E101	25 - 3/4"	155	26	55	66	156	16	PN16	BSP
12E102	32 - 1"	218	33	64	70	170	19	PN16	BSP
12E103	40 - 1 1/4"	351	42	76	84	208	21	PN16	BSP
12E104	50 - 1 1/2"	567	51	91	94	235	21	PN16	BSP
12E105	63 - 2"	948	64	109	105	274	25	PN16	BSP
12E106	75 - 2 1/2"	1756	77	133	136	344	30	PN10	BSP
12E107	90 - 3"	2822	92	159	166	416	36	PN10	BSP
12E108	110 - 4"	4366	112	183	174	465	40	PN10	BSP



ITEM 486 | Tee, male threaded outlet



Product Documents



Product Certificates

Company Certificates

