



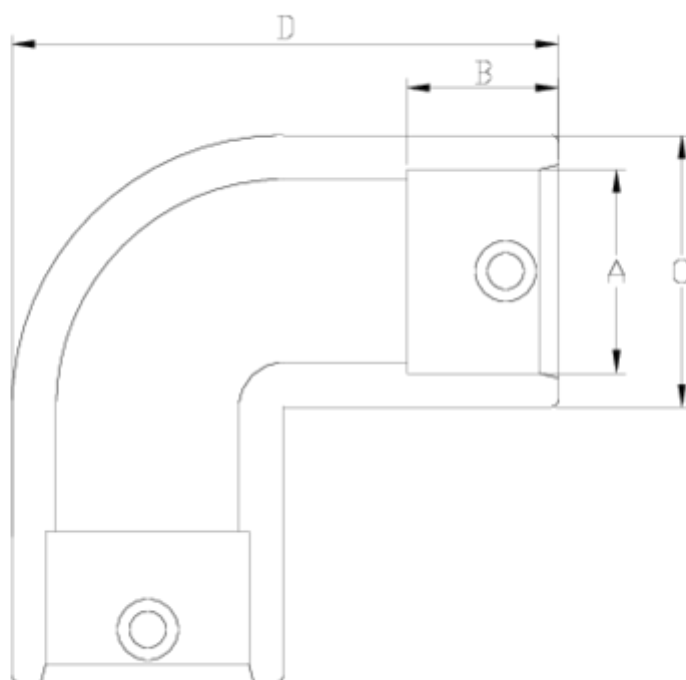
Electrofusion fittings/Welding fittings

Electrofusion 90° elbow

ITEM 160

| REFERENCE | DESCRIPTION | Net weight | Volumen (m ³) | Gross weight | Unidades lote |
|-----------|-----------------------------|------------|---------------------------|--------------|---------------|
| 1019003 | 90° ELECTROFUSION ELBOW 32 | 0,09826 | 0,00892 | 1,17 | 10 |
| 1019004 | 90° ELECTROFUSION ELBOW 40 | 0,11826 | 0,00892 | 1,37 | 10 |
| 1019005 | 90° ELECTROFUSION ELBOW 50 | 0,17383 | 0,01553 | 2,065 | 10 |
| 1019006 | 90° ELECTROFUSION ELBOW 63 | 0,30673 | 0,02244 | 3,555 | 10 |
| 1019007 | 90° ELECTROFUSION ELBOW 75 | 0,54775 | 0,03129 | 4,955 | 8 |
| 1019008 | 90° ELECTROFUSION ELBOW 90 | 0,66665 | 0,04879 | 6 | 8 |
| 1019009 | 90° ELECTROFUSION ELBOW 110 | 1,169138 | 0,06347 | 10,14 | 8 |
| 1019010 | 90° ELECTROFUSION ELBOW 125 | 1,621 | 0,06347 | 10,59 | 6 |
| 1019012 | 90° ELECTROFUSION ELBOW 160 | 3,982075 | 0,08843 | 16,95 | 4 |





ITEM 160 | Electrofusion 90° elbow

| Código | f tubo-A | Peso (g) | B | C | D | PN | MEDIDA |
|--------|----------|----------|----|-----|-----|------|---------|
| 19003 | 32 | 98 | 35 | 45 | 80 | PN16 | MÉTRICO |
| 19004 | 40 | 142 | 41 | 55 | 96 | PN16 | MÉTRICO |
| 19005 | 50 | 215 | 47 | 67 | 111 | PN16 | MÉTRICO |
| 19006 | 63 | 280 | 53 | 84 | 130 | PN16 | MÉTRICO |
| 19007 | 75 | 530 | 48 | 97 | 140 | PN16 | MÉTRICO |
| 19008 | 90 | 822 | 67 | 120 | 182 | PN16 | MÉTRICO |
| 19009 | 110 | 1190 | 80 | 139 | 210 | PN16 | MÉTRICO |
| 19010 | 125 | 1829 | 85 | 158 | 231 | PN16 | MÉTRICO |
| 19012 | 160 | 3433 | 86 | 200 | 322 | PN16 | MÉTRICO |



Product Documents



Product Certificates

Company Certificates

