



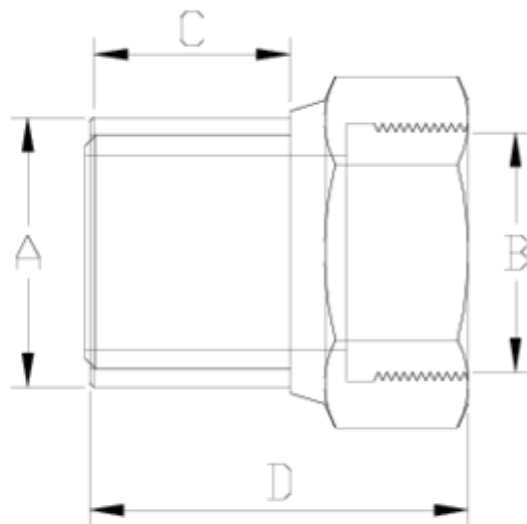
Electrofusion fittings/Welding fittings

Transition adapter, female threaded

ITEM 168



| REFERENCE | DESCRIPTION | Net weight | Volumen (m ³) | Gross weight | Unidades lote |
|-----------|--|------------|---------------------------|--------------|---------------|
| 1019223 | TRANSITION ADAPTER,F. THREAD 32-1" | 0,1936 | 0,01553 | 10,005 | 50 |
| 1019224 | TRANSITION ADAPTER,F. THREAD 32-1 1/4" | 0,2753 | 0,01553 | 8,585 | 30 |
| 1019225 | TRANSITION ADAPTER,F. THREAD 50-1 1/2" | 0,3532 | 0,01553 | 7,39 | 20 |
| 1019226 | TRANSITION ADAPTER,F. THREAD 63-2" | 0,6063 | 0,01553 | 6,25 | 10 |



ITEM 168 | Transition adapter, female threaded

| Código | f tubo-A-B | Peso (g) | C | D | PN | TIPO ROSCA |
|--------|------------|----------|----|----|------|------------|
| 19223 | 32-1" | 250 | 35 | 71 | PN16 | BSP |
| 19224 | 40-1 1/4" | 397 | 39 | 77 | PN16 | BSP |
| 19225 | 50-1 1/2" | 589 | 43 | 81 | PN16 | BSP |
| 19226 | 63-2" | 800 | 47 | 89 | PN16 | BSP |



Product Documents



Product Certificates

Company Certificates

