



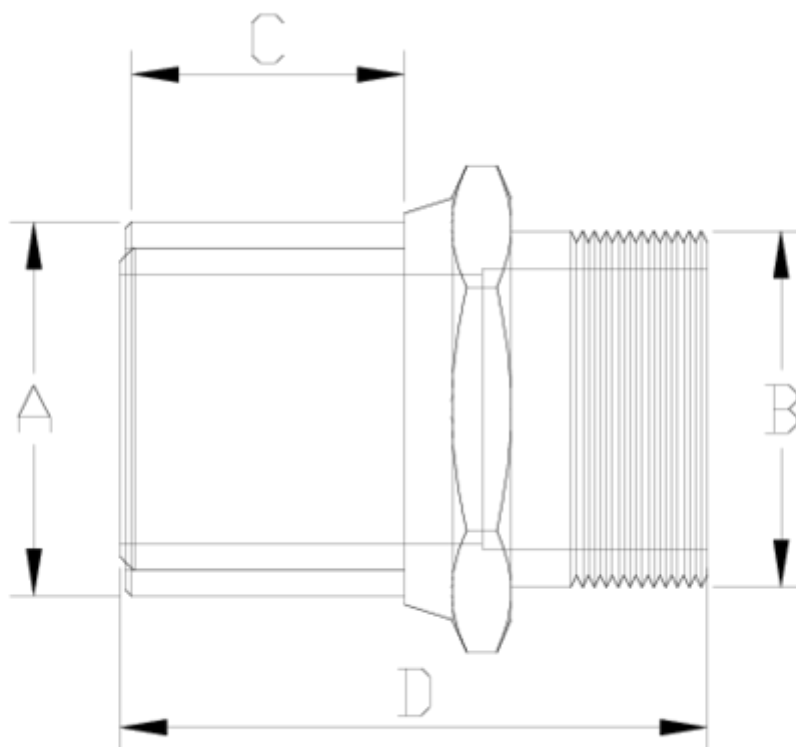
## Electrofusion fittings/Welding fittings

# Transition adapter, male threaded

## ITEM 167



REFERENCE	DESCRIPTION	Net weight	Volumen (m <sup>3</sup> )	Gross weight	Unidades lote
1019201	TRANSITION ADAPTER,M. THREAD 20-1/2"	0,081052	0,00891	4,24	50
1019202	TRANSITION ADAPTER,M. THREAD 25-3/4"	0,113846	0,02244	6,18	50
1019203	TRANSITION ADAPTER,M. THREAD 32-1"	0,179346	0,02244	9,455	50
1019204	TRANSITION ADAPTER,M. THREAD 40-1 1/4"	0,2671	0,01553	8,34	30
1019205	TRANSITION ADAPTER,M. THREAD 50-1 1/2"	0,3634	0,01553	7,595	20
1019206	TRANSITION ADAPTER,M. THREAD 63-2"	0,6992	0,01553	7,482	10
1019207	TRANSITION ADAPTER,M. THREAD 75-2 1/2"	0,8229	0,00473	0,94	1
1019208	TRANSITION ADAPTER,M. THREAD 90-3"	1,1279	0,00473	1,245	1
1019209	TRANSITION ADAPTER,M. THREAD 110-4"	2,0426	0,00892	2,23	1



## ITEM 167 | Transition adapter, male threaded

Código	f tubo-A-B	Peso (g)	C	D	PN	TIPO ROSCA
19201	20-1/2"	151	33	75	PN16	BSP
19202	25-3/4"	195	33	76	PN16	BSP
19203	32-1"	273	35	80	PN16	BSP
19204	40-1 1/4"	425	39	86	PN16	BSP
19205	50-1 1/2"	528	43	90	PN16	BSP
19206	63-2"	792	47	98	PN16	BSP
19207	75-2 1/2"	1105	59	120	PN16	BSP
19208	90-3"	1591	71	142	PN16	BSP
19209	110-4"	1965	76	148	PN16	BSP



## Product Documents



## Product Certificates

## Company Certificates

