

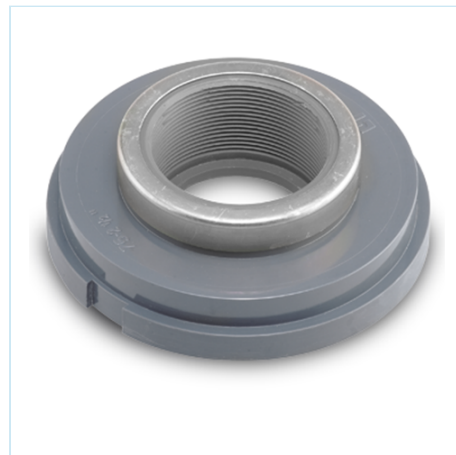


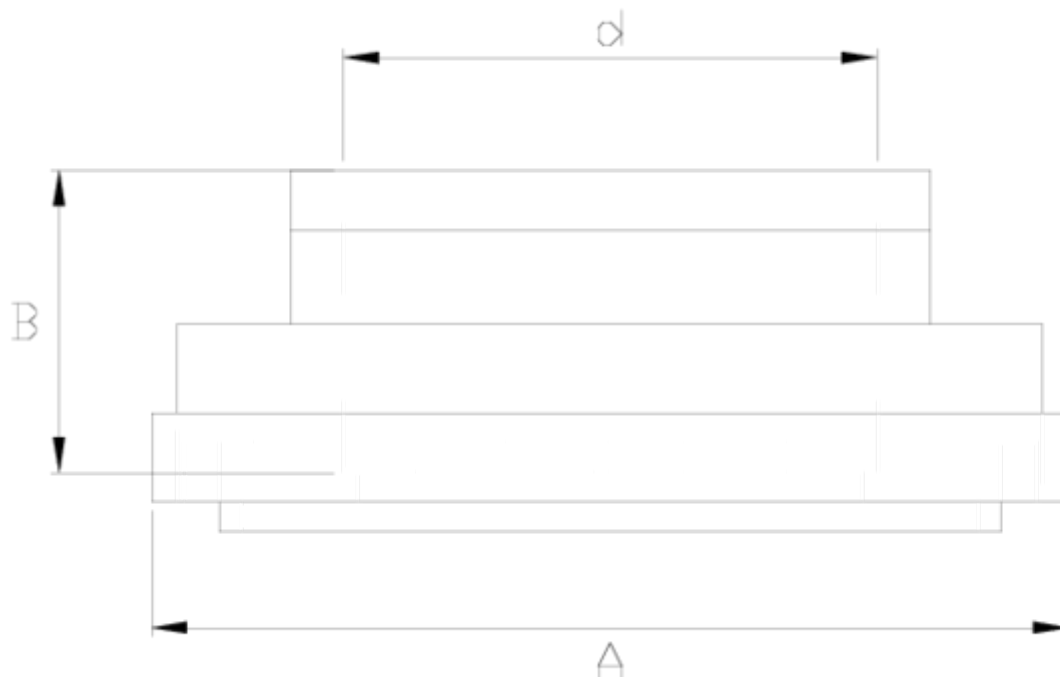
## GRPP hinged sleeve

# Female threaded outlet

## ITEM 145

REFERENCE	DESCRIPTION	Net weight	Volumen (m <sup>3</sup> )	Gross weight	Unidades lote
1005600	160-400, PVC FEMALE THR. OUTLET 1/2"	0,565275	0,01553	7,11	12
1005601	160-400, PVC FEMALE THR. OUTLET 3/4"	0,526	0,01553	7,045	12
1005602	160-400, PVC FEMALE THR. OUTLET 1"	0,553608	0,01553	6,97	12
1005603	160-400, PVC FEMALE THR. OUTLET 1 1/4"	0,487	0,03129	6,404	12
1005604	160-400, PVC FEMALE THR. OUTLET 1 1/2"	0,505692	0,01553	6,395	12
1005605	160-400, PVC FEMALE THR. OUTLET 2"	0,5435	0,02243	7,095	12
1005606	160-400, PVC FEMALE THR. OUTLET 2 1/2"	0,546	0,03129	7,125	12
1005607	160-400, PVC FEMALE THR. OUTLET 3"	0,608	0,02243	7,78	12
1005608	160-400, PVC FEMALE THR. OUTLET 4"	0,65725	0,03129	8,46	12





## ITEM 145 | Female threaded outlet

CÓDIGO	d	f tubo	PESOS	A	B	PN	TIPO ROSCA
05600	1/2"	160-200-225-250-315-400	546	160	16	PN6	BSP
05601	3/4"	160-200-225-250-315-400	526	160	19	PN6	BSP
05602	1"	160-200-225-250-315-400	506	160	22	PN6	BSP
05603	1 1/4"	160-200-225-250-315-400	487	160	26	PN6	BSP
05604	1 1/2"	160-200-225-250-315-400	467	160	31	PN6	BSP
05605	2"	160-200-225-250-315-400	530	160	38	PN6	BSP
05606	2 1/2"	160-200-225-250-315-400	566	160	44	PN6	BSP
05607	3"	160-200-225-250-315-400	561	160	51	PN6	BSP
05608	4"	160-200-225-250-315-400	668	160	61	PN6	BSP



## Product Documents



## Product Certificates

## Company Certificates

