



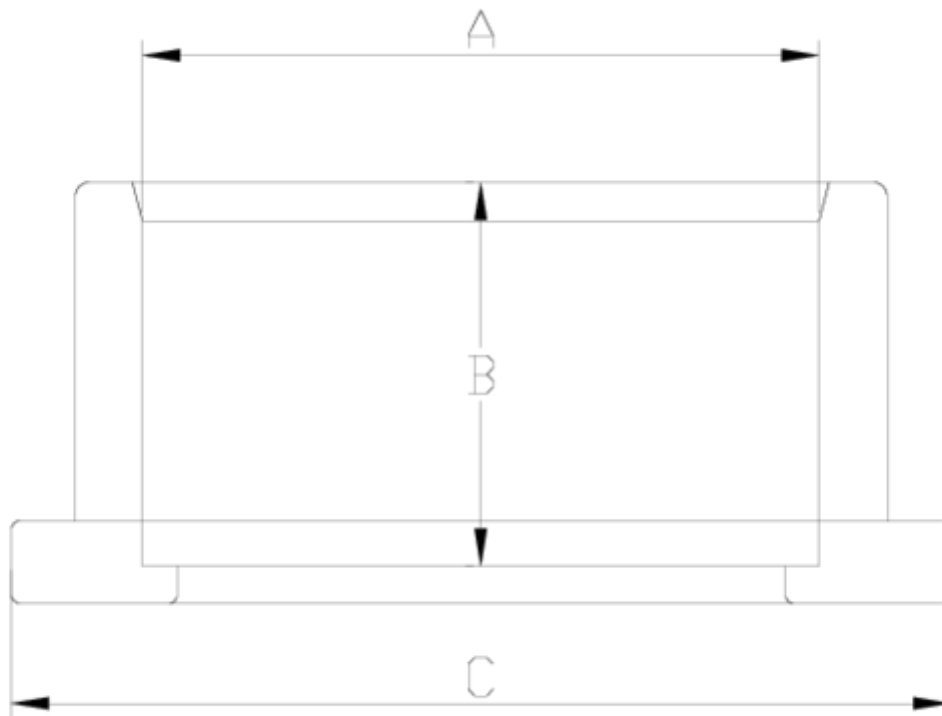
## Flanges and adaptors

# "BS" PVC plain adaptor

## ITEM 074

REFERENCE	DESCRIPTION	Net weight	Volumen (m <sup>3</sup> )	Gross weight	Unidades lote
1010400	BS FLANGE ADAPTOR Ø 1 1/2"	0,063766	0,00892	3,515	50
1010401	BS FLANGE ADAPTOR Ø 2"	0,12856	0,02244	5,373	38
1010402	BS FLANGE ADAPTOR Ø 2 1/2"	0,1904	0,03129	8,19	40
1010403	BS FLANGE ADAPTOR Ø 3"	0,3082	0,03682	10,48	32
1010404	BS FLANGE ADAPTOR Ø 4"	0,4808	0,06347	14,25	28
1010405	BS FLANGE ADAPTOR Ø 5"	0,597	0,08677	12,84	20
1010406	BS FLANGE ADAPTOR Ø 6"	0,98582	0,04717	10,5	10
1010407	BS FLANGE ADAPTOR Ø 8"	2,227143	0,08678	16,265	7





## ITEM 074 | "BS" PVC plain adaptor

Código	A	Peso (g)	B	C	PN	MEDIDA
10400	1 1/2"	64	31	73	PN10	BS
10401	2"	112	38	90	PN10	BS
10402	2 1/2"	185	44	106	PN10	BS
10403	3"	275	51	125	PN10	BS
10404	4"	468	61	150	PN10	BS
10405	5"	597	69	168	PN10	BS
10406	6"	1180	86	213	PN10	BS
10407	8"	1785	106	247	PN10	BS



## Product Documents



## Product Certificates



## Company Certificates

