

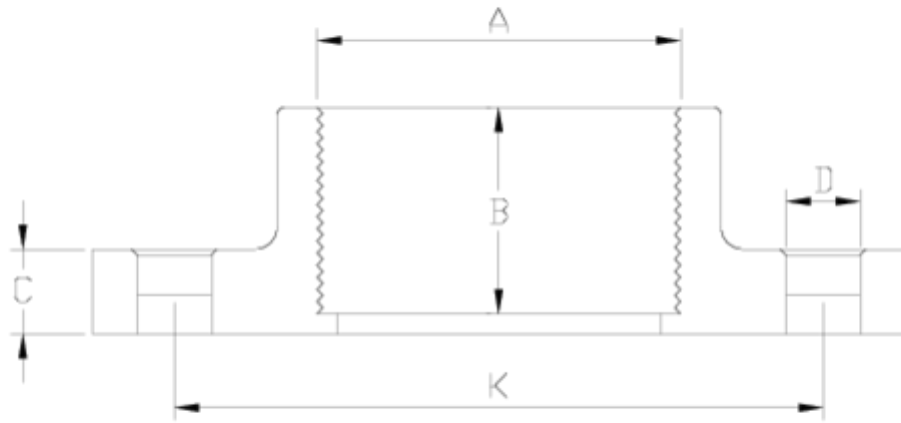


## Flanges and adaptors

# Reinforced compact flange, female threaded ITEM 071



REFERENCE	DESCRIPTION	Net weight	Volumen (m <sup>3</sup> )	Gross weight	Unidades lote
1010055	COMPACT FLANGE,F.THREAD REINF. 1 1/2"	0,366925	0,03129	15,25	40
1010056	COMPACT FLANGE,F.THREAD REINF. 2"	0,5029	0,03682	18,655	36
1010057	COMPACT FLANGE,F.THREAD REINF. 2 1/2"	0,588	0,04117	14,7524	24
1010058	COMPACT FLANGE,F.THREAD REINF. 3"	0,881603	0,06347	27,235	30
1010059	COMPACT FLANGE,F.THREAD REINF. 4"	1,061089	0,06347	19,74	18



## ITEM 071 | Reinforced compact flange, female threaded

Código	A	Peso (g)	B	K	C	D	PN	ROSCA
10055	1 1/2"	384	29	110	18	4x18	PN10	BSP
10056	2"	445	30	125	18	4x18	PN10	BSP
10057	2 1/2"	612	30	145	19	4x18	PN10	BSP
10058	3"	789	35	146-160	21	8x18	PN10	BSP
10059	4"	1045	39	178-190	23	8x18	PN10	BSP



## Product Documents



## Product Certificates



## Company Certificates

