



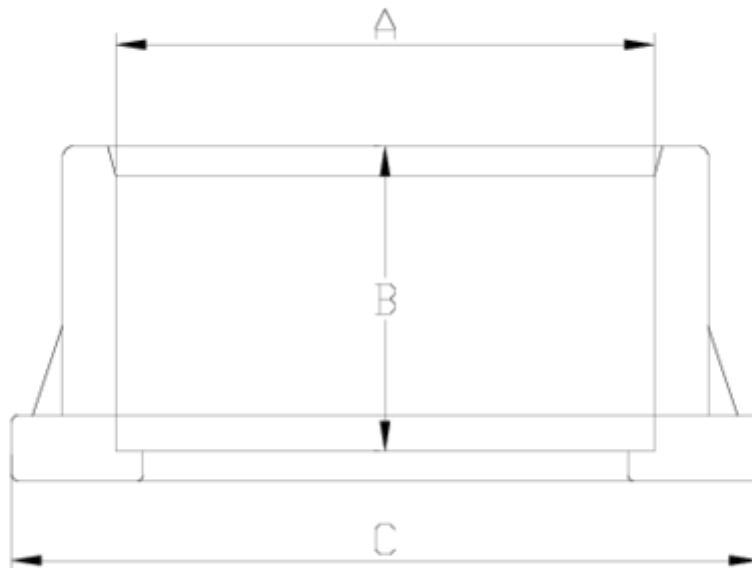
Flanges and adaptors

security conical adaptor

ITEM 079

| REFERENCE | DESCRIPTION | Net weight | Volumen (m ³) | Gross weight | Unidades lote |
|-----------|------------------------------|------------|---------------------------|--------------|---------------|
| 1010099 | SECURITY CONICAL CLAMP 90 | 0,351588 | 0,03682 | 11,8 | 32 |
| 1010101 | SECURITY CONICAL CLAMP 110 | 0,52404 | 0,03682 | 11,03 | 20 |
| 1010102 | SECURITY CONICAL CLAMP 125 | 0,659728 | 0,04460 | 12,605 | 18 |
| 1010103 | SECURITY CONICAL ADAPTOR 140 | 0,938028 | 0,06150 | 17,805 | 18 |
| 1010104 | SECURITY CONICAL CLAMP 160 | 1,15882 | 0,04717 | 12,23 | 10 |
| 1010105 | SECURITY CONICAL ADAPTOR 200 | 1,78865 | 0,04117 | 7,795 | 4 |





ITEM 079 | security conical adaptor

| Código | A | Peso (g) | B | C | PN | MEDIDA |
|--------|-----|----------|-----|-----|------|---------|
| 10099 | 90 | 370 | 51 | 125 | PN16 | MÉTRICO |
| 10101 | 110 | 482 | 61 | 150 | PN16 | MÉTRICO |
| 10102 | 125 | 647 | 69 | 168 | PN16 | MÉTRICO |
| 10103 | 140 | 915 | 76 | 188 | PN16 | MÉTRICO |
| 10104 | 160 | 1116 | 86 | 213 | PN10 | MÉTRICO |
| 10105 | 200 | 1675 | 100 | 247 | PN10 | MÉTRICO |



Product Documents



Product Certificates



Company Certificates

