



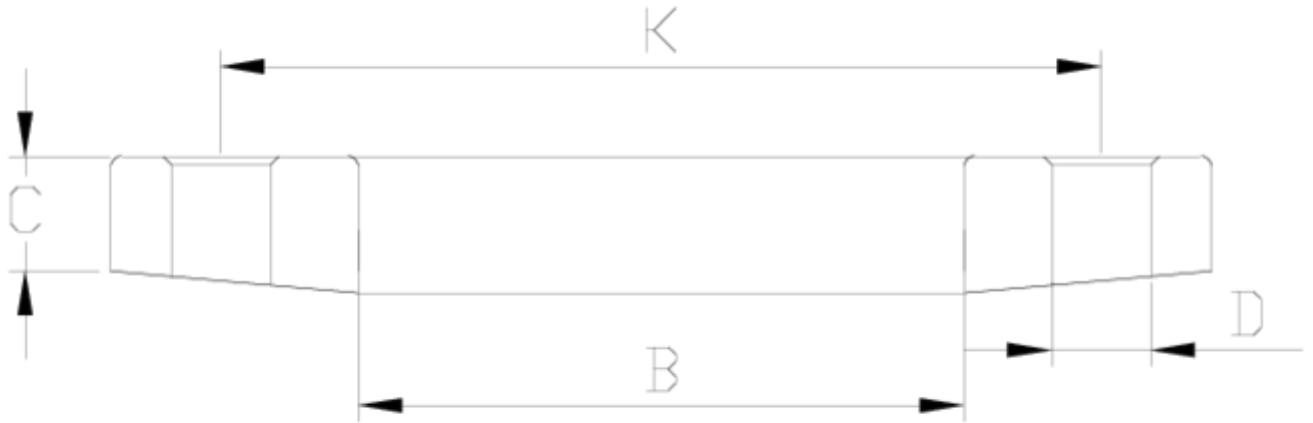
## Flanges and adaptors

# security plain flange

## ITEM 078

REFERENCE	DESCRIPTION	Net weight	Volumen (m <sup>3</sup> )	Gross weight	Unidades lote
1010008	SECURITY PLAIN FLANGE 90	0,576378	0,04117	19,23	32
1010009	SECURITY PLAIN FLANGE 110	0,68635	0,03648	14,321	20
1010010	SECURITY PLAIN FLANGE 125	0,83	0,03648	13,806	18
1010011	SECURITY PLAIN FLANGE 140	0,9346	0,03129	15,5266	16
1010012	SECURITY PLAIN FLANGE 160	1,087	0,03129	11,443	10
1010013	SECURITY PLAIN FLANGE 200	1,371838	0,04879	11,55	8





## ITEM 078 | security plain flange

Código	f	Peso (g)	B	C	K	D	PN	MEDIDA
10008	90	562	110	20	146-160	8x18	PN16	MÉTRICO
10009	110	672	133	22	178-190	8x18	PN16	MÉTRICO
10010	125	717	149	24	190	8x18	PN16	MÉTRICO
10011	140	885	167	26	210-216	8x18	PN16	MÉTRICO
10012	160	1185	190	28	235-241	8x22	PN10	MÉTRICO
10013	200	1302	227	30	270	8x22	PN10	MÉTRICO



## Product Documents



## Product Certificates



## Company Certificates

