

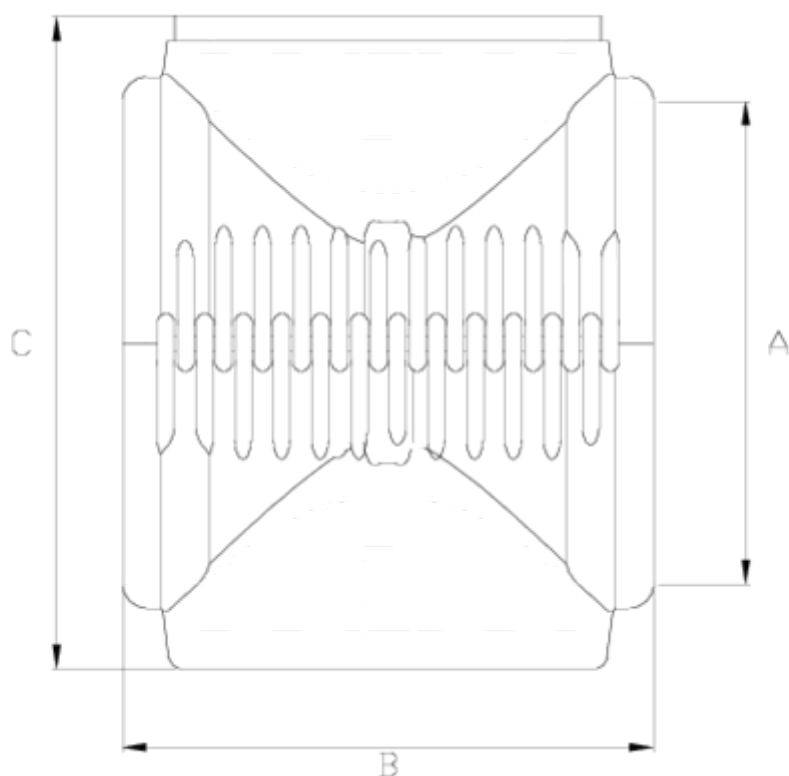


## GRPP hinged sleeve

# HINGED CLAMP SADDLE DOUBLE BODY REINFORCED ITEM 633



REFERENCE	DESCRIPTION	Net weight	Volumen (m <sup>3</sup> )	Gross weight	Unidades lote
1005179	DOUBLE BODY HINGED SLEEVE REINF. 160	2,769	0,03648	6,368	2
1005180	DOUBLE BODY HINGED SLEEVE REINF.200	3,053	0,04460	6,84	2
1005181	DOUBLE BODY HINGED SLEEVE REINF.225	3,29	0,04836	7,42	2
1005182	DOUBLE BODY HINGED SLEEVE REINF. 250	3,6975	0,04836	8,06	2
1005183	REINFORCED DOUBLE HINGED SLEEVE BODY 315	6,006	0,04880	6,59	1
1005184	DOUBLE BODY HINGED SLEEVE REINF.400	6,529	0,06347	7,429	1
1005185	REINFORCED D/ SADDLE BODY 400 140/160	6,4231	0,06347	7,21	1
1005187	REINFORCED D/ SADDLE BODY 315 140/160	5,5837	0,04880	6,2571	1



## ITEM 633 | HINGED CLAMP SADDLE DOUBLE BODY REINFORCED

CÓDIGO	f tubo	PESOS	A	B	C	PN	MEDIDA
05179	160	2949	160	225	230	PN6	MÉTRICO
05180	200	3116	200	227	270	PN6	MÉTRICO
05181	225	3449	225	225	286	PN6	MÉTRICO
05182	250	3812	250	239	295	PN6	MÉTRICO
05183	315	5014	315	250	381	PN6	MÉTRICO
05187	315	5720	315	282	419	PN6	MÉTRICO
05184	400	7050	400	282	486	PN6	MÉTRICO
05185	400	7050	400	282	474	PN6	MÉTRICO



## Product Documents



## Product Certificates

## Company Certificates

