

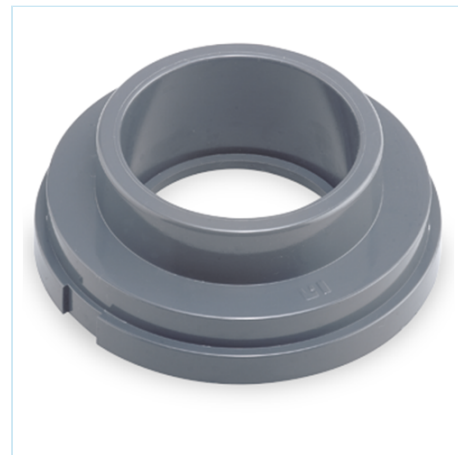


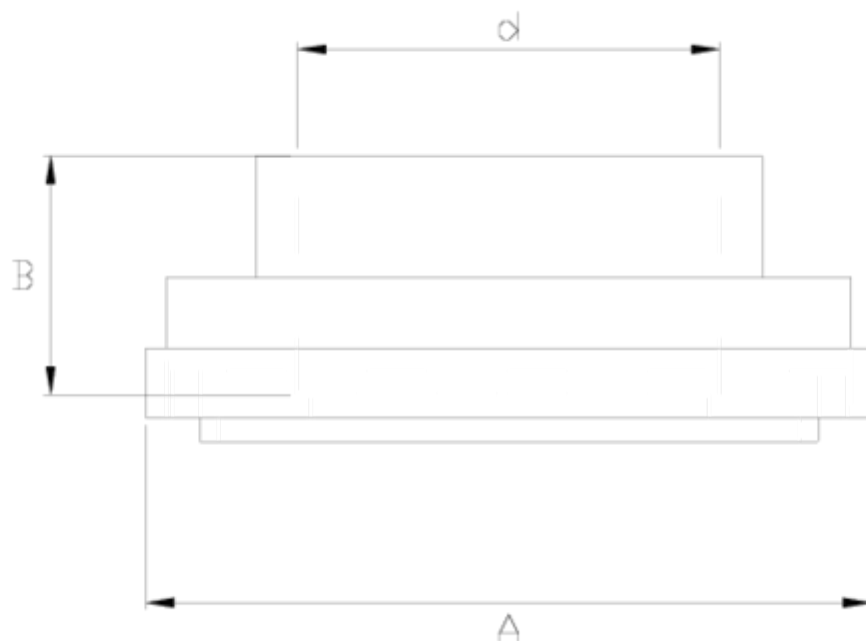
GRPP hinged sleeve

Solvent socket outlet 1

ITEM 142

REFERENCE	DESCRIPTION	Net weight	Volumen (m ³)	Gross weight	Unidades lote
1005500	160-400, PVC SOLVENT S. OUTLET 20	0,579	0,02244	7,488	12
1005501	160-400, PVC SOLVENT S. OUTLET 25	0,57	0,02244	7,1	12
1005502	160-400, PVC SOLVENT S. OUTLET 32	0,528192	0,02244	6,826	12
1005503	160-400, PVC SOLVENT S. OUTLET 40	0,51	0,02244	6,61	12
1005504	160-400, PVC SOLVENT S. OUTLET 50	0,4786	0,01553	6,07	12
1005505	160-400, PVC SOLVENT S. OUTLET 63	0,491858	0,02244	6,39	12
1005506	160-400, PVC SOLVENT S. OUTLET 75	0,4702	0,02243	6,1301	12
1005507	160-400, PVC SOLVENT S. OUTLET 90	0,505608	0,02244	6,555	12
1005508	160-400, PVC SOLVENT S. OUTLET 110	0,68	0,03129	8,28	12
1005509	160-400, PVC SOLVENT S. OUTLET 125	0,541417	0,03129	7,07	12





ITEM 142 | Solvent socket outlet 1

CÓDIGO	d	f tubo	PESOS	A	B	PN	MEDIDA
05500	20	160-200-225-250-315-400	579	160	16	PM6	MÉTRICO
05501	25	160-200-225-250-315-400	570	160	19	PM6	MÉTRICO
05502	32	160-200-225-250-315-400	560	160	22	PM6	MÉTRICO
05503	40	160-200-225-250-315-400	545	160	26	PM6	MÉTRICO
05504	50	160-200-225-250-315-400	530	160	31	PM6	MÉTRICO
05505	63	160-200-225-250-315-400	497	160	38	PM6	MÉTRICO
05506	75	160-200-225-250-315-400	502	160	44	PM6	MÉTRICO
05507	90	160-200-225-250-315-400	588	160	51	PM6	MÉTRICO
05508	110	160-200-225-250-315-400	627	160	61	PM6	MÉTRICO
05509	125	160-200-225-250-315-400	520	160	69	PM6	MÉTRICO



Pol. Ind. Plá Vallonga,
c/ Agua, 28
03006 ALICANTE (España)



+34 965 11 42 82



+34 965 11 48 62



tecnicocomercial@hidroten.es



Technical &
Commercial Service
+ 34 966 105 888



www.hidroten.es



ITEM 142 | Solvent socket outlet 1



Product Documents



Product Certificates

Company Certificates

