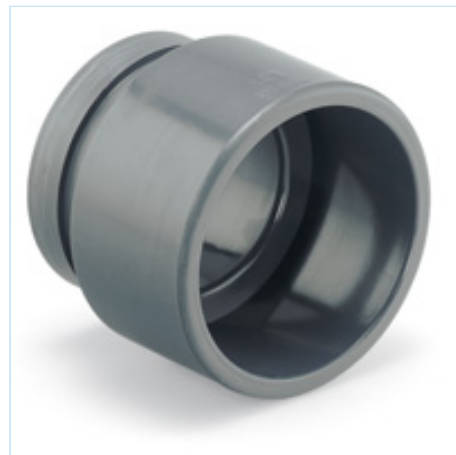


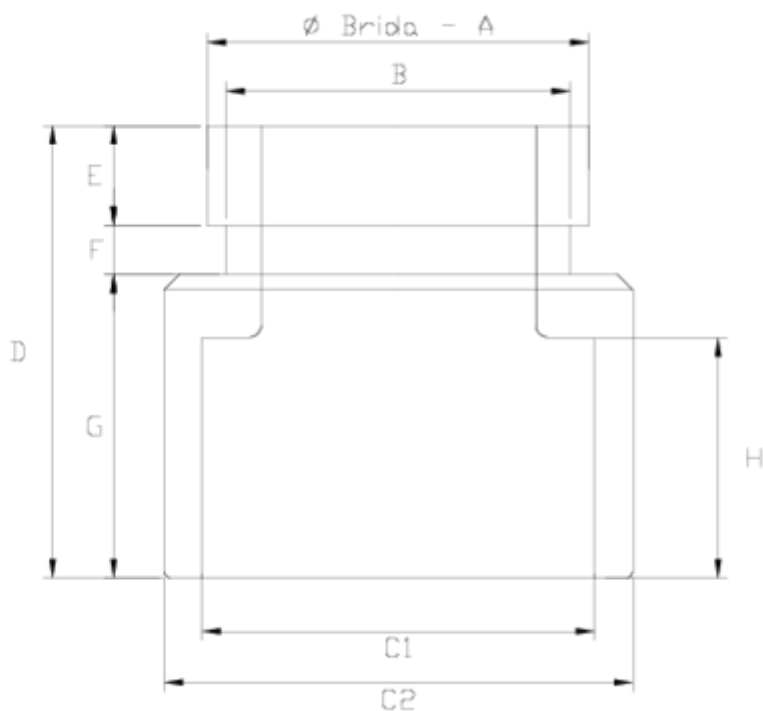


## Netvitc® coupling

# Netvitc® connection solvent socket ANSI outlet ITEM 924



| REFERENCE | DESCRIPTION                           | Net weight | Volumen (m <sup>3</sup> ) | Gross weight | Unidades lote |
|-----------|---------------------------------------|------------|---------------------------|--------------|---------------|
| 110N217   | NETVITC COUPLING SOLV. SOCKET 2" ANSI | 0,16613    | 0,00891                   | 3,51         | 20            |
| 110N219   | NETVITC COUPLING SOLV. SOCKET 3" ANSI | 0,42562    | 0,02457                   | 8,83         | 20            |
| 110N220   | NETVITC COUPLING SOLV. SOCKET 4" ANSI | 0,4677     | 0,03129                   | 5,25         | 10            |



## ITEM 924 | Netvitc® connection solvent socket ANSI outlet

| CÓDIGO | Ø BRIDA - A | C1 | C2  | PESO (g) | B   | D   | E  | F  | G  | H  | PN   | MEDIDA |
|--------|-------------|----|-----|----------|-----|-----|----|----|----|----|------|--------|
| 10N217 | 2"          | 2" | 75  | 152      | 56  | 72  | 16 | 8  | 48 | 39 | PN10 | ANSI   |
| 10N219 | 3"          | 3" | 110 | 320      | 81  | 88  | 16 | 11 | 62 | 52 | PN10 | ANSI   |
| 10N220 | 4"          | 4" | 125 | 596      | 110 | 105 | 16 | 11 | 77 | 64 | PN10 | ANSI   |



## Product Documents



## Product Certificates

## Company Certificates

