



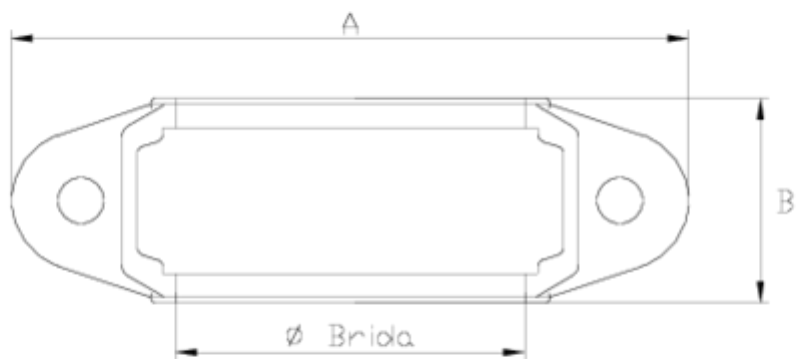
Netvitc® coupling

Netvitc® flange

ITEM 087

REFERENCE	DESCRIPTION	Net weight	Volumen (m ³)	Gross weight	Unidades lote
110N031	FLANGE NETVITC 50	0,199165	0,01553	4,36	20
110N032	FLANGE NETVITC 63	0,249365	0,02244	5,525	20
110N033	FLANGE NETVITC 75	0,40735	0,03129	8,88	20
110N034	FLANGE NETVITC 90	0,4106	0,03129	8,945	20
110N035	FLANGE NETVITC 110	0,62263	0,02243	6,794	10
110N038	FLANGE NETVITC 160	1,2106	0,02243	5,33	4
110N039	FLANGE NETVITC 200	1,4842	0,03129	6,51	4
110N150	FLANGE NETVITC 90-63	0,4601	0,03129	9,935	20
110N151	FLANGE NETVITC 110-90	0,6884	0,03129	7,457	10





ITEM 087 | Netvitc® flange

CÓDIGO	f	PESO (g)	A	B	PN	MEDIDA
10n031	1 1/2"	210	121	50	PN10	RANURADO
10n032	2"	285	132	50	PN10	RANURADO
10n033	2 1/2"	355	148	50	PN10	RANURADO
10n150	3"-2"	450	163	49	PN10	RANURADO
10n034	3"	420	163	49	PN10	RANURADO
10n151	4"-3"	630	200	54	PN10	RANURADO
10n035	4"	580	200	54	PN10	RANURADO
10n036	6"	1050	272	54	PN6	RANURADO
10n037	8"	1280	310	62	PN6	RANURADO



Product Documents



Product Certificates

Company Certificates

