

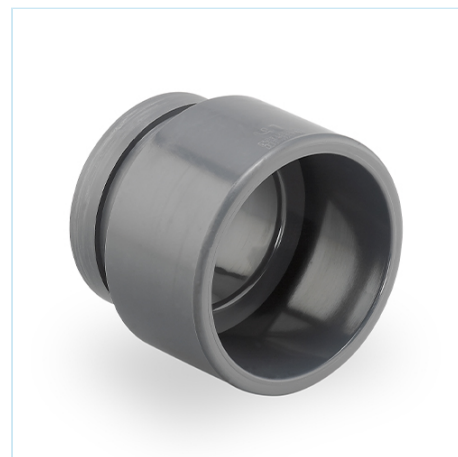


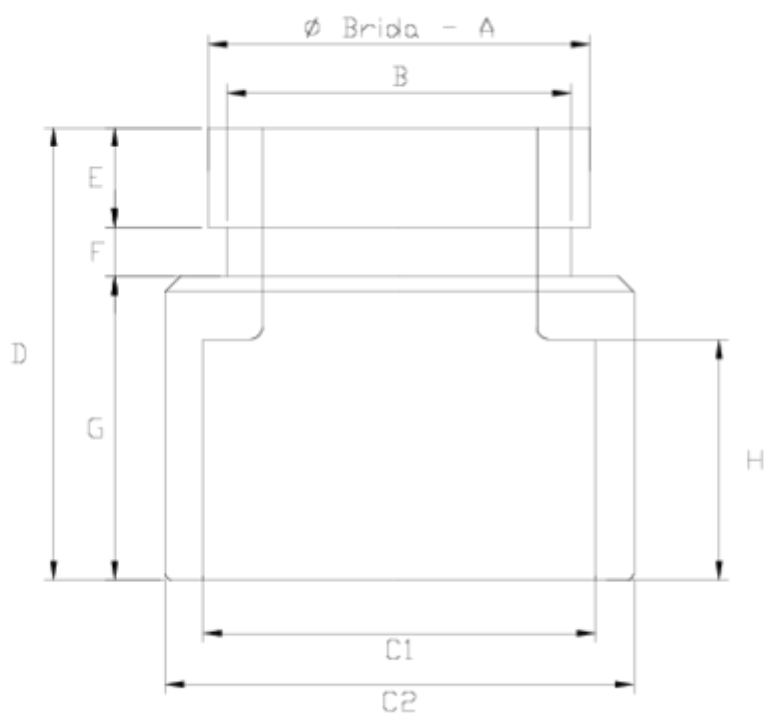
## Netvitc® coupling

# Solvent socket outlet

## ITEM 086

REFERENCE	DESCRIPTION	Net weight	Volumen (m <sup>3</sup> )	Gross weight	Unidades lote
110N016	NETVITC COUPLING SOLV. SOCKET 50	0,04113	0,00892	1,01	20
110N017	NETVITC COUPLING SOLV. SOCKET 63	0,15163	0,00892	3,22	20
110N018	NETVITC COUPLING SOLV. SOCKET 75	0,20435	0,03129	4,66	20
110N019	NETVITC COUPLING SOLV. SOCKET 90	0,400315	0,02244	8,494	20
110N020	NETVITC COUPLING SOLV. SOCKET 110	0,5317	0,03129	5,89	10
110N023	NETVITC COUPLING SOLV. SOCKET 160	1,26925	0,02243	5,5647	4





## ITEM 086 | Solvent socket outlet

CÓDIGO	f BRIDA - A	C1	C2	PESO (g)	B	D	E	F	G	H	PN	MEDIDA
10n16	1 1/2"	50	63	91	45	66	16	8	40	31	PN10	MÉTRICO
10n17	2"	63	75	143	56	72	16	8	48	38	PN10	MÉTRICO
10n18	2 1/2"	75	90	225	72	76	16	8	52	45	PN10	MÉTRICO
10n19	3"	90	110	314	81	88	16	11	62	51	PN10	MÉTRICO
10n20	4"	110	125	610	110	105	16	11	77	64	PN10	MÉTRICO
10n23	6"	160	186	1265	160	130	16	11	103	86	PN6	MÉTRICO



## Product Documents



## Product Certificates

## Company Certificates

