

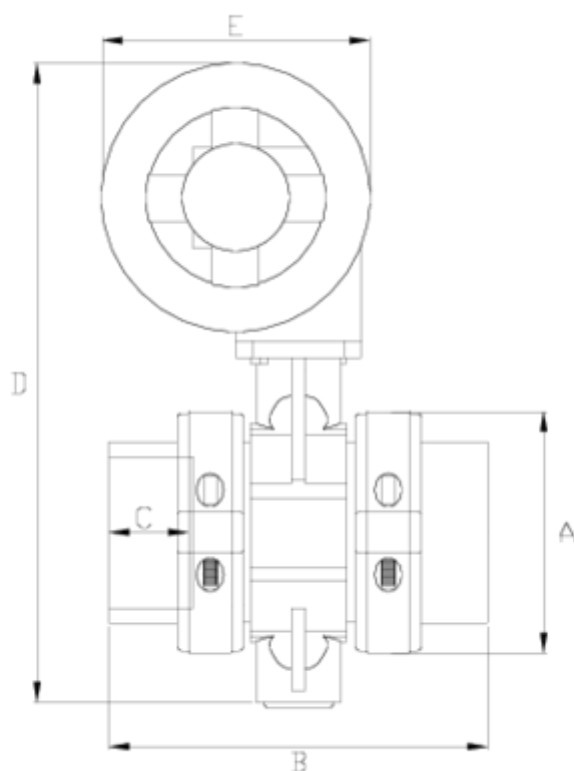


Netvitc System® butterfly valves

Manually operated, solvent socket outlet ITEM 175



REFERENCE	DESCRIPTION	Net weight	Volumen (m ³)	Gross weight	Unidades lote
109N330	BUT NET SYS V. MAN. OPER,S. SOCK 63	4,496	0,04460	5,19	1
109N331	BUT NET SYS V. MAN. OPER,S. SOCK 75	4,117	0,03129	4,69	1
109N332	BUT NET SYS V. MAN. OPER,S. SOCK 90	5,307	0,03129	5,88	1
109N333	BUT NET SYS V. MAN. OPER,S. SOCK 110	6,377	0,03129	6,95	1
109N334	BUT NET SYS V. MAN. OPER,S. SOCK 125	6,843	0,04460	7,673	1
109N335	BUT NET SYS V. MAN. OPER,S. SOCK 140	9,4095	0,06150	10,33	1
109N336	BUT NET SYS V. MAN. OPER,S. SOCK 160	11,256	0,04460	11,95	1
109N337	BUT NET SYS V. MAN. OPER,S. SOCK 200	14,45	0,06347	15,28	1
109N338	BUT NET SYS V. MAN. OPER,S. SOCK 225	13,314	0,06150	14,294	1



ITEM 175 | Manually operated, solvent socket outlet

CÓDIGO	f	BRIDA	Pesos	A	B	C	D	E	PN	MEDIDA
9N330	63	75	4282	138	218	42	362	172	PN10	MÉTRICO
9N331	75	75	4240	138	192	44	362	172	PN10	MÉTRICO
9N332	90	90	5086	164	235	52	386	172	PN10	MÉTRICO
9N333	110	110	5869	188	247	61	406	172	PN10	MÉTRICO
9N334	125	125	6843	203	282	70	417	172	PN10	MÉTRICO
9N335	140	140	7922	224	298	78	488	250	PN10	MÉTRICO
9N336	160	160	9661	251	315	86	510	250	PN10	MÉTRICO
9N337	200	200	12294	297	390	106	584	250	PN6	MÉTRICO
9N338	225	200	13314	297	476	120	584	250	PN6	MÉTRICO



Product Documents



Product Certificates

Company Certificates

