

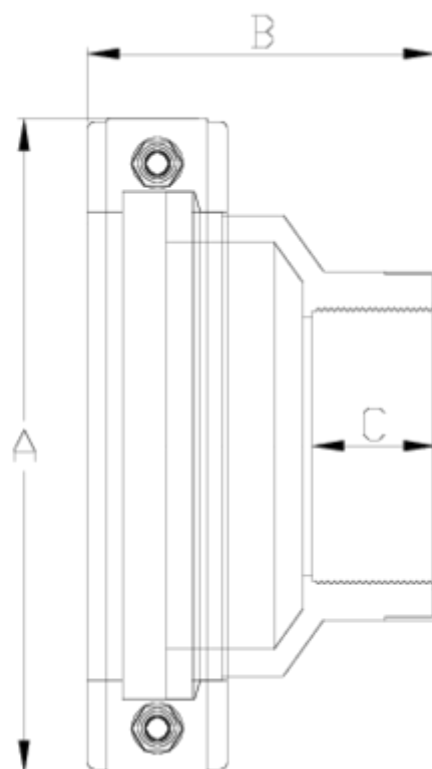


Netvitc System® butterfly valves

Reducing clamp and adaptor, female threaded outlet ITEM 181



REFERENCE	DESCRIPTION	Net weight	Volumen (m ³)	Gross weight	Unidades lote
109N486	NET SYS CLAMP&ADAPT,F-F/OUT RED. 125-2 1/2"	1,046	0,01553	4,424	4
109N487	NET SYS CLAMP&ADAPT,F-F/OUT RED. 125-3"	0,982	0,01553	4,168	4
109N488	NET SYS CLAMP&ADAPT,F-F/OUT RED. 125-4"	1,063	0,01553	4,492	4



ITEM 181 | Reducing clamp and adaptor, female treaded outlet

CÓDIGO	f	BRIDA	Pesos	A	B	C	PN	TIPO ROSCA
9N486	2 1/2"	125	1046	203	108	44	PN10	BSP
9N487	3"	125	982	203	108	51	PN10	BSP
9N488	4"	125	1063	203	108	62	PN10	BSP



Product Documents



Product Certificates

Company Certificates

