

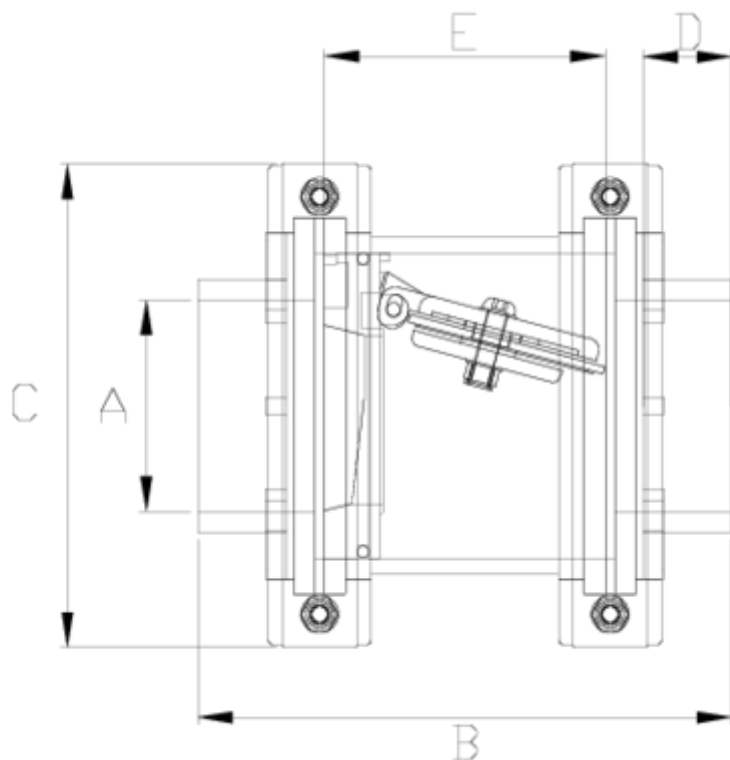


Netvitc System® lineal check valve

Solvent socket outlet - GFPP body ITEM 300



REFERENCE	DESCRIPTION	Net weight	Volumen (m ³)	Gross weight	Unidades lote
1015010	NETV. SYST. LINEAL CHECK V.,S. SOCKET 40	0,775075	0,00983	3,3721	4
1015011	NETV. SYST. LINEAL CHECK V.,S. SOCKET 50	0,818325	0,00983	3,5451	4
1015012	NETV. SYST. LINEAL CHECK V.,S. SOCKET 63	0,774725	0,00708	3,34	4
1015013	NETV. SYST. LINEAL CHECK V.,S. SOCKET 75	0,958325	0,01234	4,0813	4
1015020	NETV. SYST. LINEAL CHECK V.,S. SOCKET 90	3,0531	0,01783	3,308	1
1015021	NETV. SYST. LINEAL CHECK V.,S. SOCKET 110	3,1751	0,01783	3,43	1
1015022	NETV. SYST. LINEAL CHECK V.,S. SOCKET 125	5,4851	0,01783	5,74	1
1015023	NETV. SYST. LINEAL CHECK V.,S. SOCKET 140	5,7123	0,02457	6,03	1
1015024	NETV. SYST. LINEAL CHECK V.,S. SOCKET 160	5,9623	0,02457	6,28	1
1015026	NETV. SYST. LINEAL CHECK V.,S. SOCKET 200	9,78	0,04836	10,4451	1
1015027	NETV. SYST. LINEAL CHECK V.,S. SOCKET 225	11,385	0,06149	12,31	1
1015031	NETV. SYST. LIN CHECK V,S. SOCKET 110-DN125	5,3641	0,01783	5,619	1
1015032	NETV. SYST. LIN CHECK V,S. SOCKET 125-DN100	3,2701	0,01783	3,525	1



ITEM 300 | Solvent socket outlet - GFPP body

CÓDIGO	f	PESOS	BRIDA	DN CUERPO	B	C	D	E	PN	MEDIDA
15010	40	830	63	50	172	125	28	70	PN10	MÉTRICO
15011	50	890	63	50	176	125	31	70	PN10	MÉTRICO
15012	63	840	63	50	150	125	36	70	PN10	MÉTRICO
15013	75	1020	63	50	200	125	42	70	PN10	MÉTRICO
15020	90	2990	125	110	240	203	52	122	PN10	MÉTRICO
15021	110	3120	125	110	256	203	62	122	PN10	MÉTRICO
15032	125	3180	125	110	284	203	70	122	PN10	MÉTRICO
15031	110	4490	160	150	269	251	62	137	PN10	MÉTRICO
15022	125	4690	160	150	287	251	69	137	PN10	MÉTRICO
15023	140	5370	160	150	297	251	75	137	PN10	MÉTRICO



ITEM 300 | Solvent socket outlet - GFPP body

15024	160	5700	160	150	317	251	86	137	PN10	MÉTRICO
15026	200	9075	200	200	446	297	106	210	PN10	MÉTRICO
15027	225	10135	200	200	=210+2*161	297	120	210	PN10	MÉTRICO



Product Documents



Product Certificates

Company Certificates

