

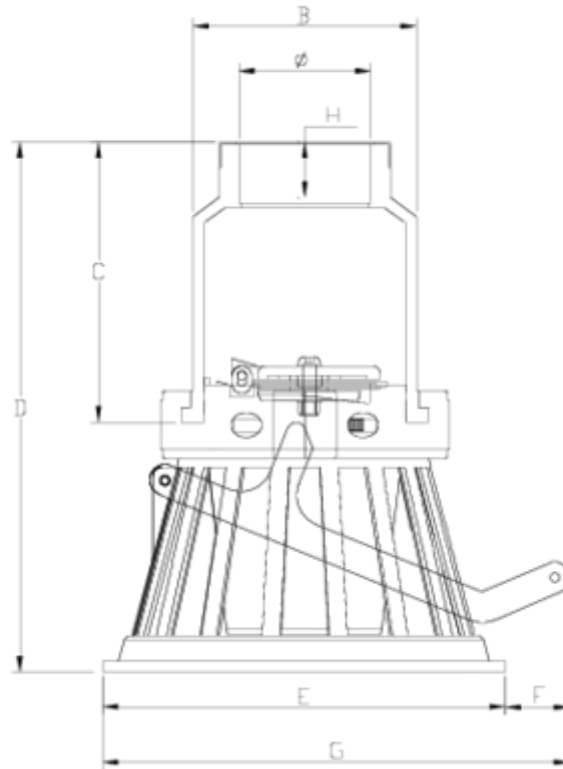


## Netwell® foot valves

# Foot valve, Female threaded outlet ITEM 290

REFERENCE	DESCRIPTION	Net weight	Volumen (m <sup>3</sup> )	Gross weight	Unidades lote
1014005	ASPIR. FOOT VALVE,F. THREAD OUT. 2"	2,304	0,02457	2,675	1
1014006	ASPIR. FOOT VALVE,F. THREAD OUT. 2 1/2"	2,3823	0,02457	2,7	1
1014007	ASPIR. FOOT VALVE,F. THREAD OUT. 3"	2,3823	0,02457	2,7	1
1014008	ASPIR. FOOT VALVE,F. THREAD OUT. 4"	2,4443	0,02457	2,762	1





## ITEM 290 | Foot valve, Female threaded outlet

CÓDIGO	Ø	PESOS	BRIDA	DN CUERPO	B	C	D	E	F	G	H	PN	TIPO ROSCA
14006	2 1/2"	1900	125	110	143	184	352	259	70	329	33	PN10	BSP
14007	3"	1910	125	110	143	184	352	259	70	329	36	PN10	BSP
14008	4"	1980	125	110	143	184	352	259	70	329	41	PN10	BSP



## Product Documents



## Product Certificates

## Company Certificates

