



PP fittings for polyethylene

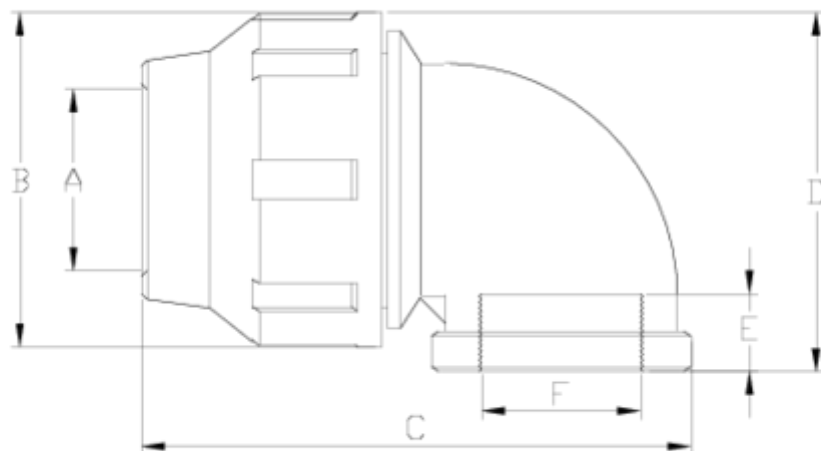
Reinforced 90° elbow, female threaded

ITEM 106



REFERENCE	DESCRIPTION	Net weight	Volumen (m ³)	Gross weight	Unidades lote
1012129	90° ELBOW,F. THREAD REINF. 20-1/2"	0,060854	0,02243	5,356	80
1012130	90° ELBOW,F. THREAD REINF. 25-3/4"	0,089713	0,03129	7,75	80
1012131	90° ELBOW,F. THREAD REINF. 32-1"	0,131569	0,04117	9,1924	65
1012132	90° ELBOW,F. THREAD REINF. 40-1 1/4"	0,247	0,03682	10,43	40
1012133	90° ELBOW,F. THREAD REINF. 50-1 1/2"	0,368203	0,06347	15,515	40
1012134	90° ELBOW,F. THREAD REINF. 63-2"	0,662213	0,06347	16,68	24
1012135	90° ELBOW,F. THREAD REINF. 75-2 1/2"	1,04601	0,04460	11,19	10
1012136	90° ELBOW,F. THREAD REINF. 90-3"	1,76716	0,03682	9,385	5
1012137	90° ELBOW,F. THREAD REINF. 110-4"	2,50365	0,02244	5,495	2
1012384	90° ELBOW,F. THREAD REINF. 32-3/4"	0,14026	0,03129	9,69	65





ITEM 106 | Reinforced 90° elbow, female threaded

Código	f tubo - F	Peso (g)	A	B	C	D	E	PN	TIPO ROSCA
12129	20 - 1/2"	64	21	46	87	57	20	PN16	BSP
12130	25 - 3/4"	89	26	55	97	65	20	PN16	BSP
12384	32 - 3/4"	132	33	64	111	76	20	PN16	BSP
12131	32 - 1"	128	33	64	111	76	22	PN16	BSP
12132	40 - 1 1/4"	235	42	76	138	91	25	PN16	BSP
12133	50 - 1 1/2"	348	51	91	153	106	25	PN16	BSP
12134	63 - 2"	596	64	109	189	120	29	PN16	BSP
12135	75 - 2 1/2"	992	77	133	220	142	34	PN10	BSP
12136	90 - 3"	1740	92	159	267	165	42	PN10	BSP
12137	110 - 4"	2423	112	183	303	201	51	PN10	BSP



ITEM 106 | Reinforced 90° elbow, female threaded



Product Documents



Product Certificates



Company Certificates

