



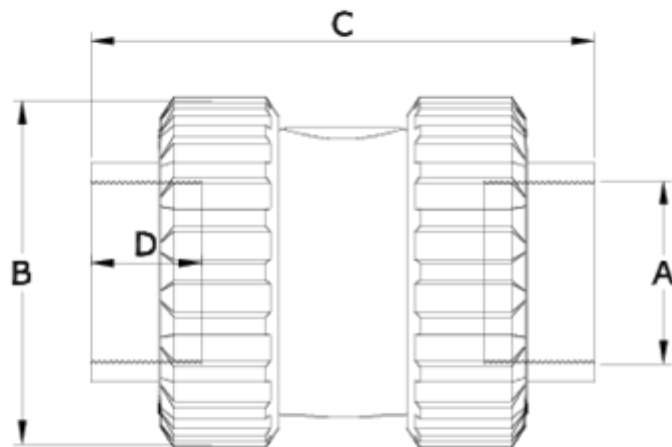
## PVC check valves (with spring)

# Female threaded outlet - FPM seal

## ITEM 267



REFERENCE	DESCRIPTION	Net weight	Volumen (m <sup>3</sup> )	Gross weight	Unidades lote
1016511	PVC CHECK V. (W/SPR), FEMALE THR.1/2" FPM	0,138	0,01553	6,117	40
1016512	PVC CHECK V. (W/SPR), FEMALE THR.3/4" FPM	0,176	0,01553	7,28	40
1016513	PVC CHECK V. (W/SPR), FEMALE THR.1" FPM	0,305077	0,02244	9,64	30
1016514	PVC CHECK V. (W/SPR), FEMALE THR.1 1/4" FPM	0,495	0,02244	10,44	20
1016515	PVC CHECK V. (W/SPR), FEMALE THR.1 1/2" FPM	0,764067	0,02244	9,7	12
1016516	PVC CHECK V. (W/SPR), FEMALE THR.2" FPM	1,192	0,03129	12,49	10
1016517	PVC CHECK V. (W/SPR), FEMALE THR.2 1/2" FPM	2,218	0,03129	9,432	4
1016518	PVC CHECK V. (W/SPR), FEMALE THR.3" FPM	3,726	0,02244	7,992	2



## ITEM 267 | Female threaded outlet - FPM seal

Código Vitón	A	Peso	B	C	D	PN	TIPO ROSCA
16511	1/2"	139	52	90	16	PN16	BSP
16512	3/4"	181	59	100	17	PN16	BSP
16513	1"	296	69	123	21	PN16	BSP
16514	1 1/4"	497	85	135	23	PN16	BSP
16515	1 1/2"	712	99	155	31	PN16	BSP
16516	2"	1125	116	163	38	PN16	BSP
16517	2 1/2"	2683	150	205	44	PN10	BSP
16518	3"	4320	178	231	52	PN10	BSP



## Product Documents



## Product Certificates

## Company Certificates

