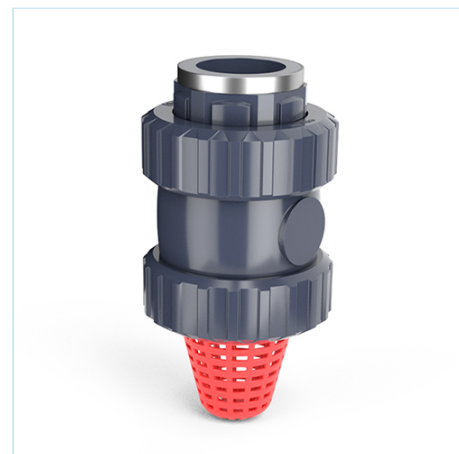




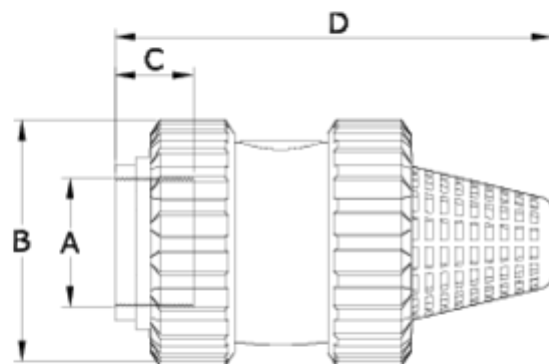
PVC check valves (with spring)

Reinforced female threaded outlet - Foot - FPM seal

ITEM 601



REFERENCE	DESCRIPTION	Net weight	Volumen (m ³)	Gross weight	Unidades lote
1016730	PVC FOOT CHECK V. (W/S) FEM.TH.REINF.1/2" FPM	0,128	0,01553	5,36	40
1016731	PVC FOOT CHECK V. (W/S) FEM.TH.REINF.3/4" FPM	0,161	0,02244	6,98	40
1016732	PVC FOOT CHECK V. (W/S) FEM.TH.REINF.1" FPM	0,2655	0,02244	8,505	30
1016733	PVC FOOT CHECK V. (W/S) FEM.TH.REINF.1 1/4" FPM	0,45	0,03129	9,56	20
1016734	PVC FOOT CHECK V. (W/S) FEM.TH.REINF.1 1/2" FPM	0,682	0,02244	8,724	12
1016735	PVC FOOT CHECK V. (W/S) FEM.TH.REINF.2" FPM	1,075	0,02244	13,44	12
1016736	PVC FOOT CHECK V. (W/S) FEM.TH.REINF.2 1/2" FPM	2,201	0,03129	9,376	4
1016737	PVC FOOT CHECK V. (W/S) FEM.TH.REINF.3" FPM	3,805	0,03129	8,17	2



ITEM 601 | Reinforced female threaded outlet - Foot - FPM seal

Código Vitón	A	Peso	B	C	D	PN	TIPO ROSCA
16730	1/2"	137	52	16	106	PN16	BSP
16731	3/4"	175	59	17	118	PN16	BSP
16732	1"	285	69	21	147	PN16	BSP
16733	1 1/4"	462	85	23	164	PN16	BSP
16734	1 1/2"	700	99	31	175	PN16	BSP
16735	2"	1096	116	38	200	PN16	BSP
16736	2 1/2"	2425	150	44	260	PN10	BSP
16737	3"	4150	178	52	303	PN10	BSP



Product Documents



Product Certificates

Company Certificates

