



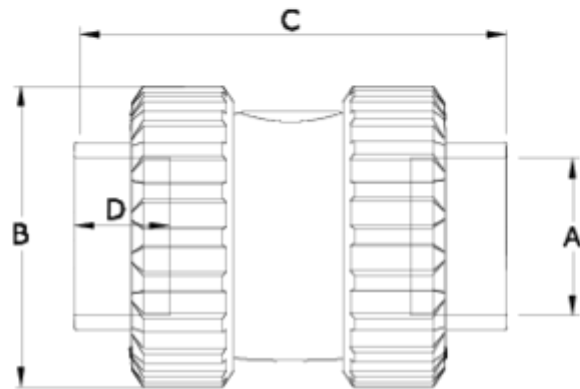
## PVC check valves (with spring)

# Solvent socket outlet - EPDM seal

## ITEM 264



REFERENCE	DESCRIPTION	Net weight	Volumen (m <sup>3</sup> )	Gross weight	Unidades lote
1016001	PVC CHECK V.S. SOCK 20 (W/SPRING)	0,1334	0,01553	5,77	40
1016002	PVC CHECK V.S. SOCK 25 (W/SPRING)	0,174458	0,02243	7,47	40
1016003	PVC CHECK V.S. SOCK 32 (W/SPRING)	0,28841	0,02244	9,14	30
1016004	PVC CHECK V.S. SOCK 40 (W/SPRING)	0,481	0,03129	10,193	20
1016005	PVC CHECK V.S. SOCK 50 (W/SPRING)	0,706	0,02244	8,71	12
1016006	PVC CHECK V.S. SOCK 63 (W/SPRING)	1,152	0,03129	11,8377	10
1016007	PVC CHECK V.S. SOCK 75 (W/SPRING)	2,2175	0,03129	9,555	4
1016008	PVC CHECK V. S. SOCK 90 (W/SPRING)	3,48365	0,02243	7,455	2
1016059	PVC CHECK V. S. SOCK 110 (W/SPRING)	3,7644	0,02244	8,38	2



## ITEM 264 | Solvent socket outlet - EPDM seal

Código EPDM	A	Peso	B	C	D	PN	MEDIDA
16001	20	131	52	85	17	PN16	MÉTRICO
16002	25	174	59	95	19	PN16	MÉTRICO
16003	32	282	69	120	24	PN16	MÉTRICO
16004	40	471	85	133	26	PN16	MÉTRICO
16005	50	677	99	150	31	PN16	MÉTRICO
16006	63	1090	116	177	38	PN16	MÉTRICO
16007	75	2616	150	216	44	PN10	MÉTRICO
16008	90	4194	178	257	51	PN10	MÉTRICO
16059	110	4435	178	286	61	PN10	MÉTRICO



## Product Documents



## Product Certificates

## Company Certificates

