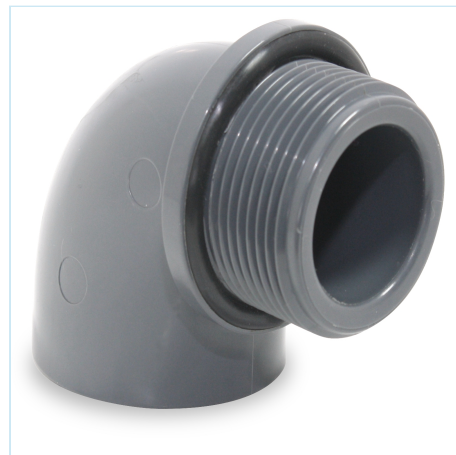


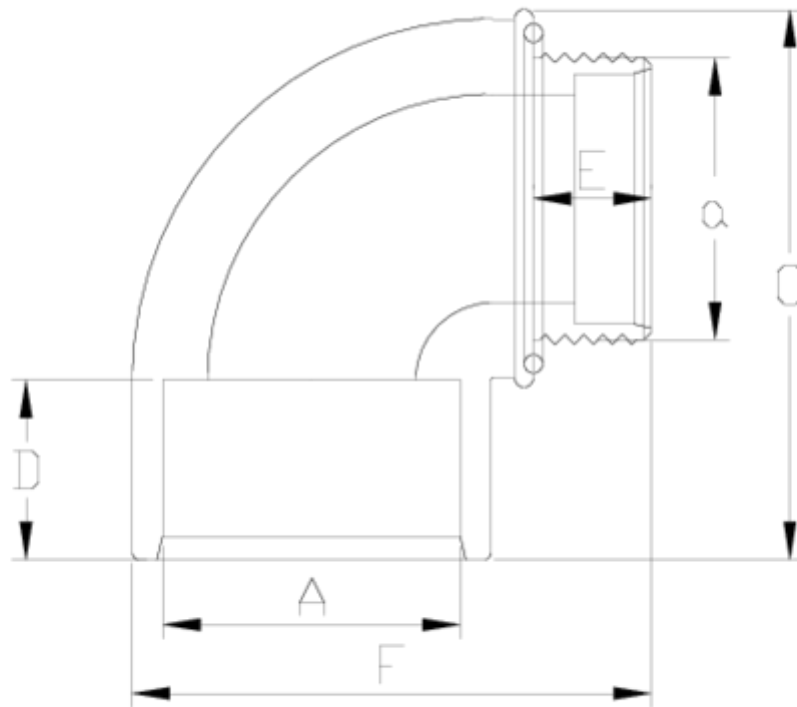


PVC-U pressure fittings

90° PVC ELBOW MALE THREAD-SOLVENT ITEM 197



REFERENCE	DESCRIPTION	Net weight	Volumen (m ³)	Gross weight	Unidades lote
1002142	ELBOW 90° PLAIN/MALE TH. 32-1" W/O-Ring	0,045366	0,01553	2,595	50
1002143	ELBOW 90° PLAIN/MALE TH. 40-1 1/4" W/O-Ring	0,088266	0,01553	4,74	50
1002144	ELBOW 90° PLAIN/MALE TH. 50-1 1/2" W/O-Ring	0,12174	0,03129	6,66	50
1002145	ELBOW 90° PLAIN/MALE TH. 63-2" W/O-Ring	0,254157	0,04880	8,2	30



ITEM 197 | 90° PVC ELBOW MALE THREAD-SOLVENT

Código	Axa	Peso (g)	C	D	E	F	PN	ROSCA
02142	32x1"	49	56	22	19	59	PN10	BSP
02143	40x1 1/4"	77	75	26	21	74	PN10	BSP
02144	50x1 1/2"	120	91	31	22	85	PN10	BSP
02145	63x2"	258	109	38	26	109	PN10	BSP



Product Documents



Product Certificates



Company Certificates

