



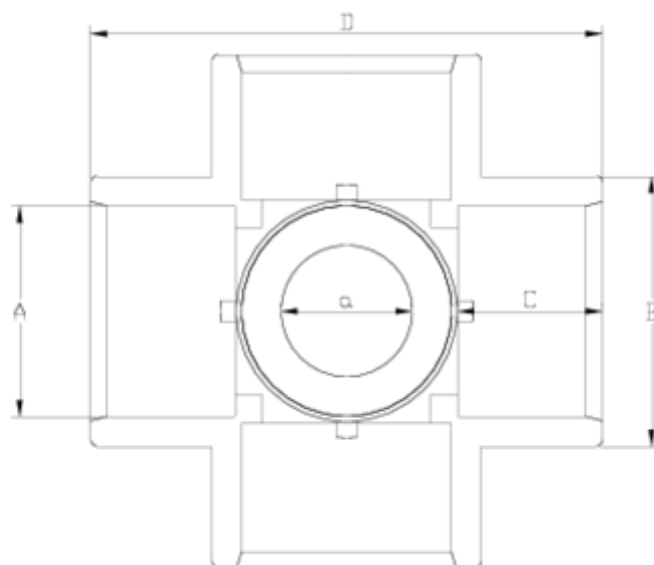
## PVC-U pressure fittings

# "AIR" Plain 90° cross, Solvent socket outlet ITEM 625



REFERENCE	DESCRIPTION	Net weight	Volumen (m <sup>3</sup> )	Gross weight	Unidades lote
1001660	"AIR" 90° CROSS S. SOCKET OUTLET 20-20	0,045065	0,00892	1,99	40
1001661	"AIR" 90° CROSS S. SOCKET OUTLET 25-20	0,056708	0,01553	2,595	40
1001662	"AIR" 90° CROSS S. SOCKET OUTLET 32-20	0,093923	0,02244	3,775	35
1001665	"AIR" 90° CROSS S. SOCKET OUTLET 50-20	0,238231	0,06347	9,125	35
1001666	"AIR" 90° CROSS S. SOCKET OUTLET 50-25	0,22666	0,06347	8,72	35





## ITEM 625 | "AIR" Plain 90° cross, Solvent socket outlet

Código	A	Peso (g)	B	C	D	PN	MEDIDA
01660	20-20	51	27	16	56	PN16	MÉTRICO
01661	25-20	92	33	19	66	PN16	MÉTRICO
01662	32-20	135	41	22	82	PN16	MÉTRICO
01665	50-20	310	63	31	121	PN16	MÉTRICO
01666	50-25	324	63	31	121	PN16	MÉTRICO



## Product Documents



## Product Certificates



## Company Certificates

