



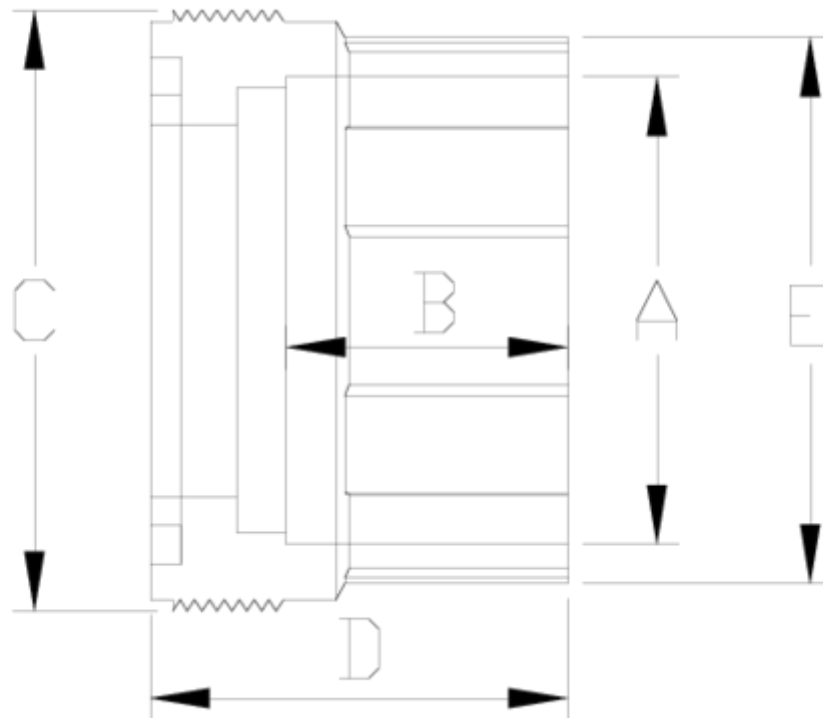
PVC-U pressure fittings

"BS" union, socket solvent

ITEM 399

| REFERENCE | DESCRIPTION | Net weight | Volumen (m ³) | Gross weight | Unidades lote |
|-----------|-----------------------------|------------|---------------------------|--------------|---------------|
| 1001985 | UNION SOLV. SOCK. BS 1/2" | 0,012 | 0,00473 | 0,35 | 20 |
| 1001986 | UNION SOLV. SOCK. BS 3/4" | 0,024 | 0,00473 | 0,59 | 20 |
| 1001987 | UNION SOLV. SOCK. BS 1" | 0,03 | 0,00473 | 0,71 | 20 |
| 1001988 | UNION SOLV. SOCK. BS 1 1/4" | 0,061 | 0,00473 | 0,6561 | 10 |
| 1001989 | UNION SOLV. SOCK. BS 1 1/2" | 0,089 | 0,00473 | 0,9361 | 10 |
| 1001990 | UNION SOLV. SOCK. BS 2" | 0,123 | 0,00473 | 1,2761 | 10 |





ITEM 399 | "BS" union, socket solvent

| Código | A | Peso (g) | B | C | D | E | PN | MEDIDA |
|--------|--------|----------|----|----|----|----|------|--------|
| 01985 | 1/2" | 12 | 16 | 33 | 26 | 28 | PN16 | BS |
| 01986 | 3/4" | 24 | 19 | 42 | 29 | 36 | PN16 | BS |
| 01987 | 1" | 30 | 22 | 48 | 32 | 42 | PN16 | BS |
| 01988 | 1 1/4" | 61 | 26 | 59 | 41 | 52 | PN16 | BS |
| 01989 | 1 1/2" | 89 | 31 | 66 | 46 | 59 | PN16 | BS |
| 01990 | 2" | 123 | 38 | 78 | 56 | 73 | PN16 | BS |
| 01931 | 2 1/2" | 225 | 44 | 89 | 61 | 85 | PN16 | BS |



Product Documents



Product Certificates



Company Certificates

