



PVC-U pressure fittings



ITEM 221

REFERENCE	DESCRIPTION	Net weight	Volumen (m ³)	Gross weight	Unidades lote
1002230	RED. TEE 90° PLAIN O./MID.FEMALE TH.OUTLET 25-1/2"	0,05123	0,01553	5,962	110
1002231	RED. TEE 90° PLAIN/THREAD O. 32-1/2"	0,062723	0,02244	6,76	100
1002232	RED. TEE 90° PLAIN O./MID.FEMALE TH.OUTLET 32-3/4"	0,067173	0,02244	7,205	100
1002233	RED. TEE 90° PLAIN O./MID.FEMALE TH.OUTLET 40-1/2"	0,102689	0,03129	9,815	90
1002234	RED. TEE 90° PLAIN O./MID.FEMALE TH.OUTLET 40-3/4"	0,104338	0,03129	8,92	80
1002235	RED. TEE 90° PLAIN O./MID.FEMALE TH.OUTLET 40-1"	0,112088	0,03129	9,54	80
1002236	RED. TEE 90° PLAIN O./MID.FEMALE TH.OUTLET 50-3/4"	0,155317	0,04117	10,736	65
1002237	RED. TEE 90° PLAIN O./MID.FEMALE TH.OUTLET 50-1"	0,1631	0,04117	11,24	65
1002238	RED. TEE 90° PLAIN O./MID.FEMALE TH.O. 50-1 1/4"	0,183532	0,04117	12,57	65
1002239	RED. TEE 90° PLAIN/FEMALE TH. 63-1"	0,3128	0,06347	16,425	50
1002240	RED. TEE 90° PLAIN O./MID.FEMALE TH.O. 63-1 1/4"	0,321362	0,06347	16,855	50
1002241	RED. TEE 90° PLAIN O./MID.FEMALE TH.O. 63-1 1/2"	0,341453	0,06347	14,445	40
1002242	RED. TEE 90° PLAIN O./MID.FEMALE TH.OUTLET 75-1"	0,482	0,03648	10,234	20
1002243	RED. TEE 90° PLAIN O./MID.FEMALE TH.O.75-1 1/4"	0,462709	0,04117	10,82	22
1002244	RED. TEE 90° PLAIN O./MID.FEMALE TH.O.75-1 1/2"	0,4209	0,04117	9,298	20
1002245	RED. TEE 90° PLAIN O./MID.FEMALE TH.OUTLET 75-2"	0,54398	0,04117	11,52	20
1002246	RED. TEE 90° PLAIN O./MID.FEMALE TH.O.90-1 1/4"	0,8119	0,03682	10,292	12
1002247	RED. TEE 90° PLAIN O./MID.FEMALE TH.O.90-1 1/2"	0,8434	0,03682	10,67	12
1002248	RED. TEE 90° PLAIN O./MID.FEMALE TH.OUTLET 90-2"	0,94	0,03682	11,9013	12
1002249	RED. TEE 90° PLAIN O./MID.FEMALE TH.O.90-2 1/2"	0,855683	0,04717	10,91	12
1002252	RED. TEE 90° PLAIN O./MID.FEMALE TH.O.110-2"	1,49385	0,06150	15	10
1002253	RED. TEE 90° PLAIN O./MID.FEMALE TH.O.110-2"	1,5938	0,06150	16	10





PROYECTO 50-172





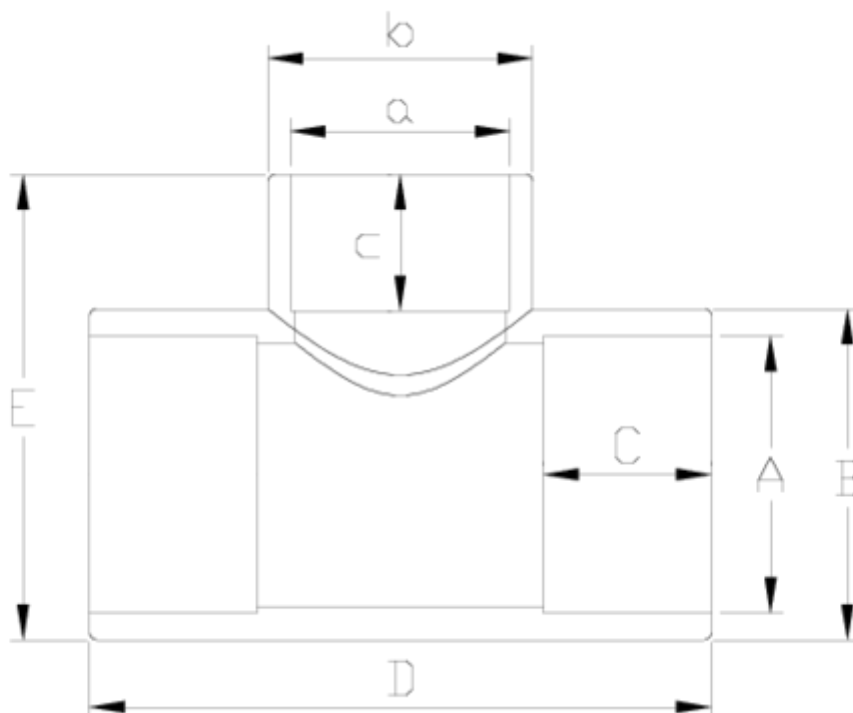
PVC-U pressure fittings

Central F/T plain 90° reducing tee

ITEM 221

REFERENCE	DESCRIPTION	Net weight	Volumen (m ³)	contenido.Peso bruto	Unidades lote
-----------	-------------	------------	---------------------------	----------------------	---------------





ITEM 221 | Central F/T plain 90° reducing tee

Código	A-a	Peso (g)	B	C	b	c	D	E	PN	MEDIDA
02230	25-1/2"	37	33	19	27	16	66	47	PN10	BSP
02231	32-1/2"	61	40	22	27	16	79	57	PN10	BSP
02232	32-3/4"	65	40	22	32	19	79	58	PN10	BSP
02233	40-1/2"	87	50	22	27	16	95	66	PN10	BSP
02234	40-3/4"	101	50	26	32	19	95	67	PN10	BSP
02235	40-1"	105	50	26	40	22	95	70	PN10	BSP
02236	50-3/4"	149	60	26	32	19	114	78	PN10	BSP
02237	50-1"	152	60	31	40	22	114	80	PN10	BSP
02238	50-1 1/4"	161	60	31	50	26	114	84	PN10	BSP
02239	63-1"	300	76	31	40	22	142	96	PN10	BSP



ITEM 221 | Central F/T plain 90° reducing tee

02240	63-1 1/4"	303	76	38	50	26	142	100	PN10	BSP
02241	63-1 1/2"	318	76	38	62	31	142	102	PN10	BSP
02242	75-1"	531	91	38	41	22	171	109	PN10	BSP
02243	75-1 1/4"	465	89	45	50	26	167	114	PN10	BSP
02244	75-1 1/2"	163	89	44	60	31	167	117	PN10	BSP
02245	75-2"	574	89	44	76	38	167	126	PN10	BSP
02246	90-1 1/4"	832	107	44	50	26	200	132	PN10	BSP
02247	90-1 1/2"	951	107	51	60	31	200	140	PN10	BSP
02248	90-2"	940	107	51	76	38	200	140	PN10	BSP
02249	90-2 1/2"	947	107	51	92	44	200	150	PN10	BSP
02252	110-2"	1299	130	61	76	38	238	165	PN10	BSP
02253	110-3"	1345	130	61	110	39	238	173	PN10	BSP



Product Documents



Product Certificates



Company Certificates

