



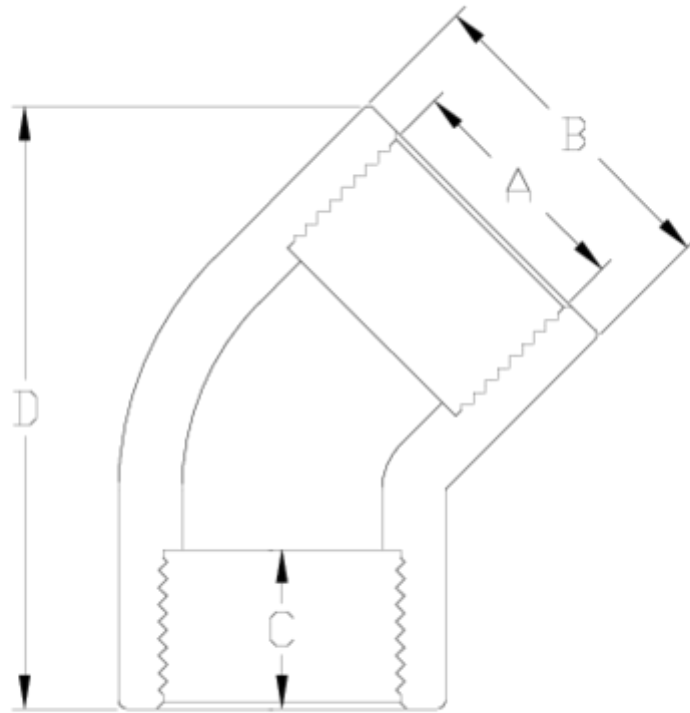
PVC-U pressure fittings

F/F threaded 45° elbow

ITEM 008

REFERENCE	DESCRIPTION	Net weight	Volumen (m ³)	Gross weight	Unidades lote
1002311	45° ELBOW F. THREAD/F. THREAD 1/2"-1/2"	0,017779	0,00473	1,895	100
1002312	45° ELBOW F. THREAD/F. THREAD 3/4"-3/4"	0,028056	0,00892	2,993	100
1002313	45° ELBOW F. THREAD/F. THREAD 1"-1"	0,053783	0,01553	5,705	100
1002314	45° ELBOW F. THREAD/F. THREAD 1 1/4"-1 1/4"	0,094518	0,03129	10,97	110
1002315	45° ELBOW F. THREAD/F. THREAD 1 1/2"-1 1/2"	0,145438	0,04717	16,64	110
1002316	45° ELBOW F. THREAD/F. THREAD 2"-2"	0,274785	0,04717	15,755	55
1002317	45° ELBOW F. THREAD/F. THREAD 2 1/2"-2 1/2"	0,391897	0,04117	13,66	33
1002318	45° ELBOW F. THREAD/F. THREAD 3"-3"	0,677881	0,04117	11,535	16





ITEM 008 | F/F threaded 45° elbow

Código	A	Peso (g)	B	C	D	PN	ROSCA
02311	1/2"	20	27	16	48	PN10	BSP
02312	3/4"	27	33	17	53	PN10	BSP
02313	1"	54	41	21	63	PN10	BSP
02314	1 1/4"	80	50	23	80	PN10	BSP
02315	1 1/2"	156	61	24	95	PN10	BSP
02316	2"	260	76	28	125	PN10	BSP
02317	2 1/2"	361	89	32	137	PN10	BSP
02318	3"	676	107	35	162	PN10	BSP



Product Documents



Product Certificates



Company Certificates

