



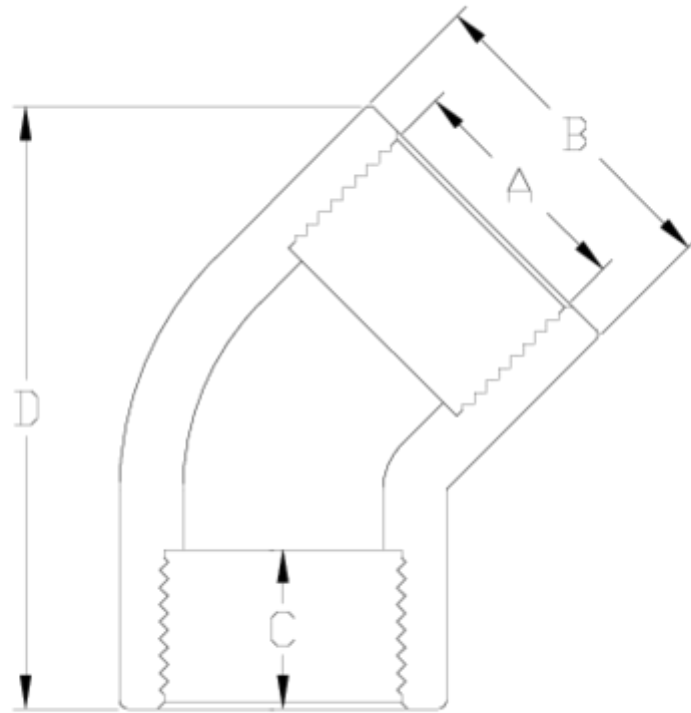
## PVC-U pressure fittings

# F/F tread 45° elbow - white range

## ITEM 038

REFERENCE	DESCRIPTION	Net weight	Volumen (m <sup>3</sup> )	Gross weight	Unidades lote
1002685	45° ELBOW F. THR./F. THR. 1 1/2"-1 1/2" - WHITE	0,185	0,04717	21,11	110
1002686	45° ELBOW F. THR./F. THR. 2"-2" - WHITE	0,265	0,04717	15,335	55





## ITEM 038 | F/F tread 45° elbow - white range

Código	A	Peso (g)	B	C	D	PN	ROSCA
02685	1 1/2"	156	61	24	95	PN10	BSP
02686	2"	260	76	28	125	PN11	BSP



## Product Documents



## Product Certificates



## Company Certificates

