



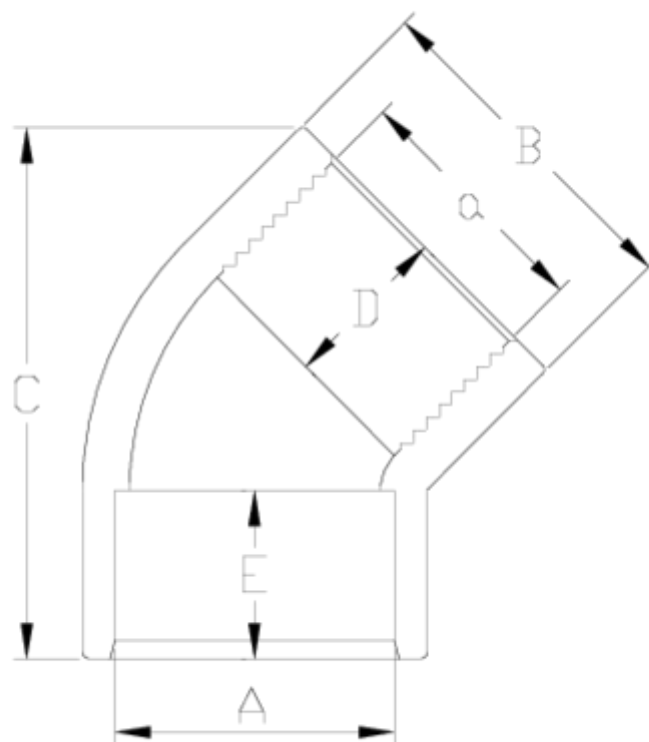
## PVC-U pressure fittings

# Plain F/T 45° elbow

## ITEM 007

REFERENCE	DESCRIPTION	Net weight	Volumen (m <sup>3</sup> )	Gross weight	Unidades lote
1002211	45° ELBOW PLAIN/FEM. THREADED 20-1/2"	0,016929	0,00473	1,81	100
1002212	45° ELBOW PLAIN/FEM. THREADED 25-3/4"	0,027576	0,00892	2,945	100
1002213	45° ELBOW PLAIN/FEM. THREADED 32-1"	0,052583	0,01553	5,585	100
1002214	45° ELBOW PLAIN/FEM. THREADED 40-1 1/4"	0,093291	0,03129	10,835	110
1002215	45° ELBOW PLAIN/FEM. THREADED 50-1 1/2"	0,130529	0,04717	15	110
1002216	45° ELBOW PLAIN/FEM. THREADED 63-2"	0,2416	0,04717	13,93	55
1002217	45° ELBOW PLAIN/FEM. THREADED 75-2 1/2"	0,356442	0,04117	12,49	33
1002218	45° ELBOW PLAIN/FEM. THREADED 90-3"	0,682256	0,04117	11,605	16





## ITEM 007 | Plain F/T 45° elbow

Código	A-a	Peso (g)	B	C	D	E	PN	ROSCA
02211	20-1/2"	17	27	48	16	16	PN10	BSP
02212	25-3/4"	28	33	53	19	17	PN10	BSP
02213	32-1"	52	41	63	22	21	PN10	BSP
02214	40-1 1/4"	74	50	80	26	23	PN10	BSP
02215	50-1 1/2"	131	61	95	31	24	PN10	BSP
02216	63-2"	234	75	125	38	28	PN10	BSP
02217	75-2 1/2"	358	89	140	45	32	PN10	BSP
02218	90-3"	638	107	162	51	35	PN10	BSP



## Product Documents



## Product Certificates



## Company Certificates

