



PVC-U pressure fittings



REFERENCE	DESCRIPTION	Net weight	Volumen (m ³)	Gross weight	Unidades lote
1002037	PVC ADAPTOR BUSHES, M. THREAD 16-20-1/2"	0,01	0,00472	1,51	150
1002728	PVC ADAPTOR BUSHES, M. THREAD 25-32-1/2"	0,0241	0,00892	2,595	100
1002729	PVC ADAPTOR BUSHES, M. THREAD 25-32-1"	0,030226	0,00892	3,21	100
1002731	PVC ADAPTOR BUSHES, M. THREAD 32-40-3/4"	0,0386	0,00892	3,275	80
1002732	PVC ADAPTOR BUSHES, M. THREAD 32-40-1"	0,041604	0,01553	3,655	80
1002733	PVC ADAPTOR BUSHES, M. THREAD 32-40-1 1/4"	0,046541	0,01553	4,05	80
1002741	PVC ADAPTOR BUSHES, M. THREAD 40-50-1"	0,073976	0,01553	5,505	70
1002742	PVC ADAPTOR BUSHES, M. THREAD 40-50-1 1/4"	0,08	0,02244	6,0877	70
1002743	PVC ADAPTOR BUSHES, M. THREAD 40-50-1 1/2"	0,078676	0,02244	5,995	70
1002751	PVC ADAPTOR BUSHES, M. THREAD 50-63-1"	0,121222	0,02244	7,761	60
1002752	PVC ADAPTOR BUSHES, M. THREAD 50-63-1 1/4"	0,120872	0,02244	7,74	60
1002753	PVC ADAPTOR BUSHES, M. THREAD 50-63-1 1/2"	0,123538	0,03129	7,9	60
1002754	PVC ADAPTOR BUSHES, M. THREAD 50-63-2"	0,128783	0,03129	8,3	60
1002761	PVC ADAPTOR BUSHES, M. THREAD 63-75-1"	0,167813	0,04717	15,745	90
1002762	PVC ADAPTOR BUSHES, M. THREAD 63-75-1 1/4"	0,17	0,06347	16,09	90
1002763	PVC ADAPTOR BUSHES, M. THREAD 63-75-1 1/2"	0,17	0,06347	16,0869	90
1002764	PVC ADAPTOR BUSHES, M. THREAD 63-75-2"	0,177479	0,06347	16,76	90
1002765	PVC ADAPTOR BUSHES, M. THREAD 63-75-2 1/2"	0,20099	0,06347	18,876	90
1002766	PVC ADAPTOR BUSHES, M. THREAD 75-90-2 1/2"	0,297738	0,04717	14,04	45
1002767	PVC ADAPTOR BUSHES, M. THREAD 90-110-3"	0,511248	0,04717	13,423	25
1002768	PVC ADAPTOR BUSHES, M. THREAD 110-125-3"	0,584	0,03264	9,985	16
1002769	PVC ADAPTOR BUSHES, M. THREAD 75-90-2"	0,281404	0,04717	13,305	45
1002770	PVC ADAPTOR BUSHES, M. THREAD 75-90-3"	0,31696	0,04717	14,905	45



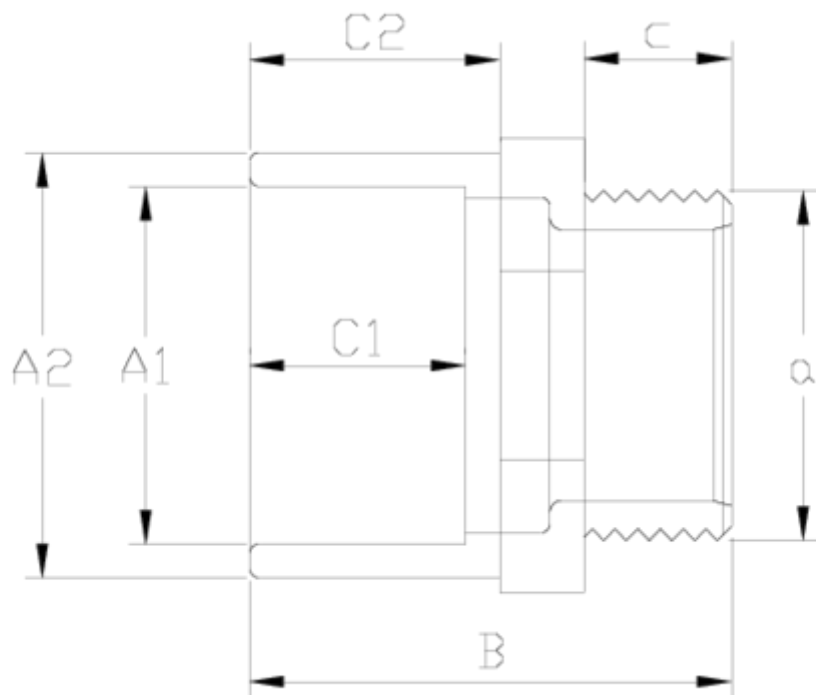
PVC-U pressure fittings

Plain/threaded nipple

ITEM 020

REFERENCE	DESCRIPTION	Net weight	Volumen (m ³)	contenido.Peso bruto	Unidades lote
1002771	PVC ADAPTOR BUSHES, M. THREAD 90-110-2 1/2"	0,506552	0,03682	13,213	25
1002800	PVC ADAPTOR BUSHES, M. THREAD 90-110-4"	0,594	0,06347	15,68	25





ITEM 020 | Plain/threaded nipple

Codigo	A1-A2 x a	Peso (g)	B	C1	C2	c	PN	MEDIDA	ROSCA
02037	16-20x1/2"	8	35	15	16	12	PN16	MÉTRICO	BSP
02000	16-20x3/8"	7	35	15	16	12	PN16	MÉTRICO	BSP
02001	20-25x1/2"	14	38	16	19	14	PN16	MÉTRICO	BSP
02728	25-32x1/2"	24	48	19	22	14	PN16	MÉTRICO	BSP
02002	25-32x3/4"	26	51	19	22	17	PN16	MÉTRICO	BSP
02729	25-32x1"	29	53	19	22	19	PN16	MÉTRICO	BSP
02731	32-40x3/4"	38	54	22	26	16	PN16	MÉTRICO	BSP
02732	32-40x1"	41	57	22	26	19	PN16	MÉTRICO	BSP
02733	32-40x1 1/4"	45	59	22	26	22	PN16	MÉTRICO	BSP
02741	40-50x1"	72	64	26	31	19	PN16	MÉTRICO	BSP



ITEM 020 | Plain/threaded nipple

02742	40-50x1 1/4"	75	65	26	31	22	PN16	MÉTRICO	BSP
02743	40-50x1 1/2"	79	66	26	31	22	PN16	MÉTRICO	BSP
02751	50-63x1"	114	72	31	39	19	PN16	MÉTRICO	BSP
02752	50-63x1 1/4"	118	74	31	38	22	PN16	MÉTRICO	BSP
02753	50-63x1 1/2"	121	74	31	38	22	PN16	MÉTRICO	BSP
02754	50-63x2"	128	79	31	38	26	PN16	MÉTRICO	BSP
02761	63-75x1"	164	79	38	44	19	PN10	MÉTRICO	BSP
02762	63-75x1 1/4"	16	81	38	44	22	PN10	MÉTRICO	BSP
02763	63-75x1 1/2"	172	81	38	44	22	PN10	MÉTRICO	BSP
02764	63-75x2"	173	85	38	44	26	PN10	MÉTRICO	BSP
02765	63-75x2 1/2"	200	89	38	44	31	PN10	MÉTRICO	BSP
02769	75-90x2"	275	93	44	51	26	PN10	MÉTRICO	BSP
02766	75-90x2 1/2"	294	98	44	51	31	PN10	MÉTRICO	BSP
02770	75-90x3"	345	100	44	51	33	PN10	MÉTRICO	BSP
02771	90-110-2 1/2"	490	109	51	61	31	PN10	MÉTRICO	BSP
02767	90-110x3"	493	111	51	61	33	PN10	MÉTRICO	BSP
02800	90-110-4"	525	118	51	61	40	PN10	MÉTRICO	BSP
02768	110-125x3"	508	120	61	69	33	PN10	MÉTRICO	BSP
02009	110-125x4"	532	127	61	69	40	PN10	MÉTRICO	BSP



Product Documents



Product Certificates



Company Certificates

