



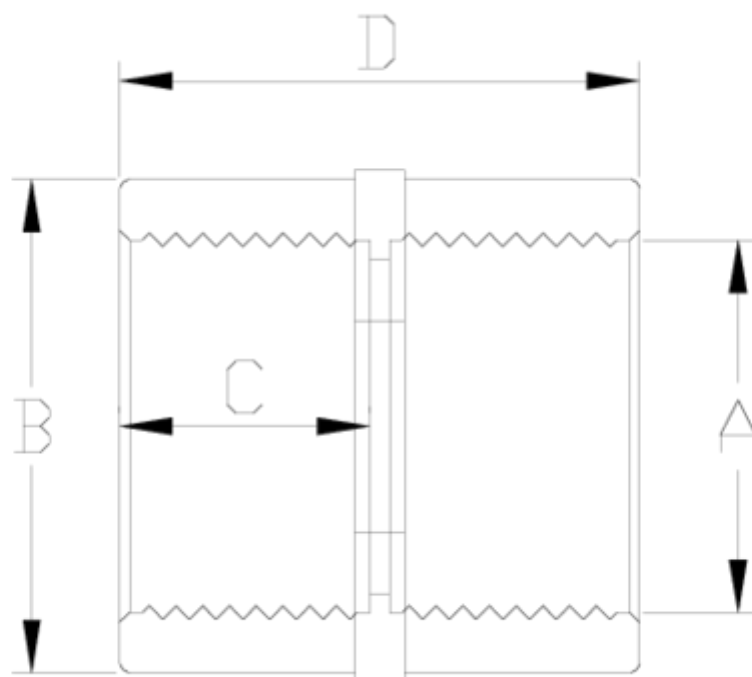
## PVC-U pressure fittings

# Union coupling, female threaded

## ITEM 016



REFERENCE	DESCRIPTION	Net weight	Volumen (m <sup>3</sup> )	Gross weight	Unidades lote
1002050	UNION BUSH FEMALE THREADED 1/2"-1/2"	0,015929	0,00473	1,71	100
1002051	UNION BUSH FEMALE THREADED 3/4"-3/4"	0,022326	0,00892	2,42	100
1002052	UNION BUSH FEMALE THREADED 1"-1"	0,042894	0,00892	3,19	70
1002053	UNION BUSH FEMALE THREADED 1 1/4"-1 1/4"	0,066191	0,02244	5,452	75
1002054	UNION BUSH FEMALE THREADED 1 1/2"-1 1/2"	0,109948	0,03682	11,544	100
1002055	UNION BUSH FEMALE THREADED 2"-2"	0,192243	0,04717	15,06	75
1002056	UNION BUSH FEMALE THREADED 2 1/2"-2 1/2"	0,229	0,04717	11,635	48
1002058	UNION BUSH FEMALE THREADED 3"-3"	0,445242	0,03682	11,235	24
1002059	UNION BUSH FEMALE THREADED 4"-4"	0,550944	0,04460	9,545	16



## ITEM 016 | Union coupling, female threaded

Codigo	A	Peso (g)	B	C	D	PN	ROSCA
02050	1/2"	18	27	16	35	PN10	BSP
02051	3/4"	27	33	19	41	PN10	BSP
02052	1"	44	41	22	47	PN10	BSP
02053	1 1/4"	72	50	26	55	PN10	BSP
02054	1 1/2"	110	61	31	60	PN10	BSP
02055	2"	169	75	38	79	PN10	BSP
02056	2 1/2"	297	90	44	92	PN10	BSP
02058	3"	503	108	51	107	PN10	BSP
02059	4"	632	131	61	128	PN10	BSP



## Product Documents



## Product Certificates



## Company Certificates

