



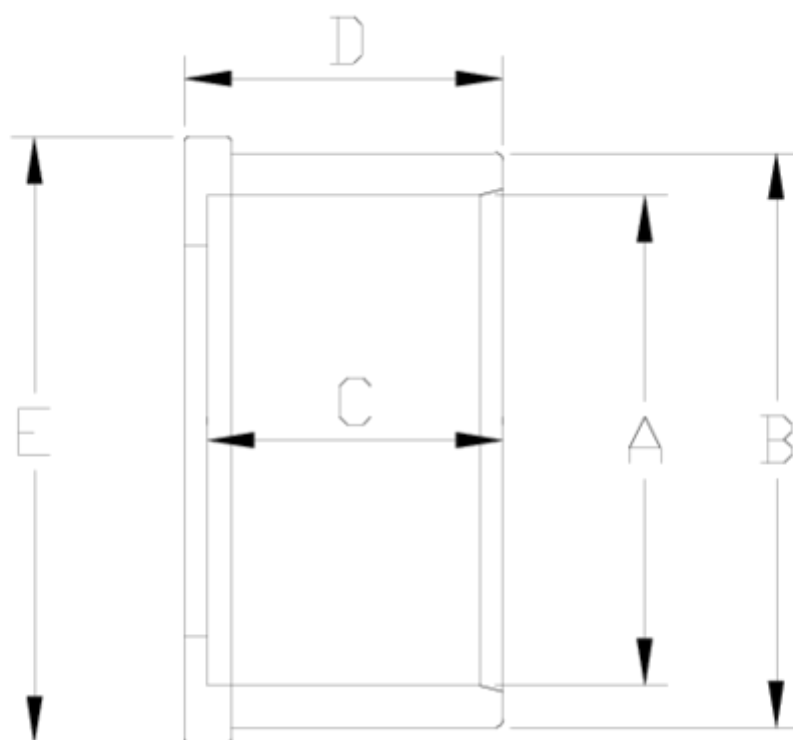
## PVC-U pressure fittings

# Union coupling, solvent socket outlet

## ITEM 402



REFERENCE	DESCRIPTION	Net weight	Volumen (m <sup>3</sup> )	Gross weight	Unidades lote
1001905	UNION SOLV. SOCK. 20	0,008245	0,00473	0,29	100
1001906	UNION SOLV. SOCK. 25	0,019995	0,00473	0,525	20
1001907	UNION SOLV. SOCK. 32	0,019645	0,00473	0,51	20
1001908	UNION SOLV. SOCK. 40	0,03679	0,00473	0,485	10
1001909	UNION SOLV. SOCK. 50	0,04329	0,00473	0,55	10
1001910	UNION SOLV. SOCK. 63	0,074	0,00473	0,86	10
1001911	UNION SOLV. SOCK. 75	0,166	0,00891	1,843	10
1001912	UNION SOLV. SOCK. 90	0,240433	0,00000	1,63	6
1001914	REDUCING UNION SOLV. SOCK. 50-40	0,0543	0,00472	5,572	100
1001915	REDUCING UNION SOLV. SOCK. 63-50	0,08929	0,00473	1,01	10
1001924	UNION SOLV. SOCK. 110	0,41815	0,00892	1,86	4



## ITEM 402 | Union coupling, solvent socket outlet

Código	A	Peso (g)	B	C	D	E	PN	MEDIDA
01905	20	8	27	16	19	30	PN16	MÉTRICO
01906	25	16	35	19	22	39	PN16	MÉTRICO
01907	32	21	41	22	26	45	PN16	MÉTRICO
01908	40	43	50	26	35	63	PN16	MÉTRICO
01914	50-40	43	50	26	35	63	PN16	MÉTRICO
01909	50	52	63	31	44	63	PN16	MÉTRICO
01915	63-50	52	63	31	44	63	PN16	MÉTRICO
01910	63	75	76	38	41	78	PN16	MÉTRICO
01911	75	135	87	44	48	85	PN16	MÉTRICO
01912	90	250	109	51	54	119	PN16	MÉTRICO



## ITEM 402 | Union coupling, solvent socket outlet

01913

110

423

131

61

68

142

PN16

MÉTRICO



## Product Documents



## Product Certificates



## Company Certificates

