



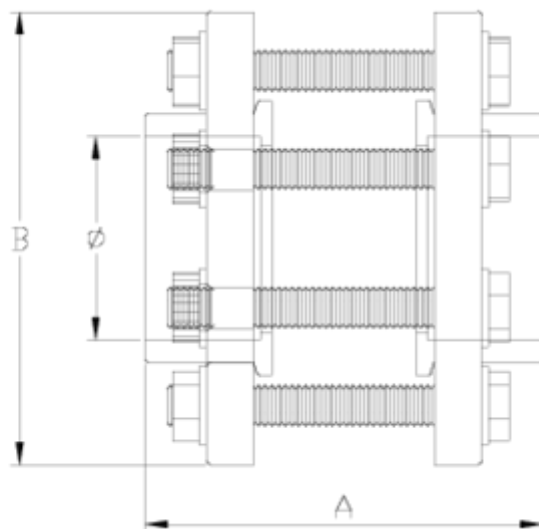
## System check valves

# Conical flange set

## ITEM 288

REFERENCE	DESCRIPTION	Net weight	Volumen (m <sup>3</sup> )	Gross weight	Unidades lote
1010304	PLAIN FLANGE SET 75 CV SYS	2,267	0,00891	4,72	2
1010305	CONICAL FLANGE SET 90 CV SYS	4,1658	0,00892	4,365	1
1010306	CONICAL FLANGE SET 110 CV SYS	4,9215	0,01553	5,26	1
1010307	CONICAL FLANGE SET 125 CV SYS	5,5965	0,01553	5,935	1
1010308	CONICAL FLANGE SET 140 CV SYS	6,7515	0,01553	7,09	1
1010309	CONICAL FLANGE SET 160 CV SYS	9,9435	0,02244	10,445	1
1010310	PLAIN FLANGE SET 63 CV SYS	2,0263	0,00891	4,24	2
1010317	PLAIN FLANGE SET 250 CV SYS	20,8782	0,04717	21,52	1
1010318	PLAIN FLANGE SET 315 CV SYS	22,501	0,13096	23,2604	1
1010325	PLAIN FLANGE SET RED. 200-PN10 CV SYS	12,937	0,03682	13,5	1
1010326	PLAIN FLANGE SET RED. 225 CV SYS	13,127	0,03682	13,68	1





## ITEM 288 | Conical flange set

Código	f tubo	Peso (g)	DN	A	B	C	Agujeros	PN	MEDIDA
10310	63	3550	65	143	165	38	18x4	PN16	MÉTRICO
10304	75	3650	65	162	185	44	18x4	PN16	MÉTRICO
10305	90	4256	80	196	200	51	18x8	PN16	MÉTRICO
10306	110	5002	100	205	220	60	18x8	PN16	MÉTRICO
10307	125	5533	110	231	230	69	18x8	PN16	MÉTRICO
10308	140	6512	125	257	250	76	18x8	PN16	MÉTRICO
10309	160	9804	150	280	285	86	22x8	PN10	MÉTRICO
10325	200-PN 10	13382	200	327	340	106	22x8	PN10	MÉTRICO
10326	225	12172	200	354	340	127	22x8	PN10	MÉTRICO
10317	250	19674	250	398	399	131	22x12	PN10	MÉTRICO



## ITEM 288 | Conical flange set

10318	315	25200	300	490	450	164	22x12	PN10	MÉTRICO
10272	400	51100	400	438	580	207	26x16	MÉTRICO	MÉTRICO



## Product Documents



## Product Certificates

## Company Certificates

