



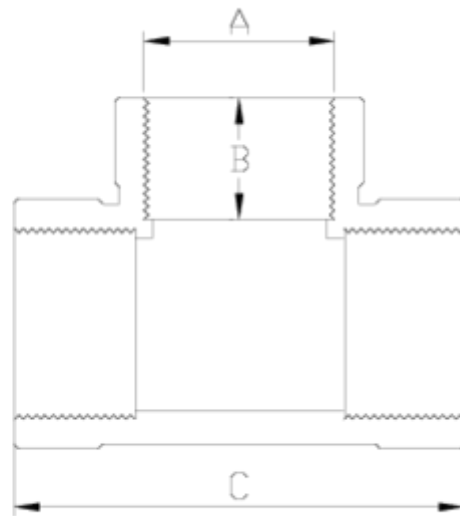
## PP threaded fittings

# Tee female thread

## ITEM 902

| REFERENCE | DESCRIPTION              | Net weight | Volumen (m <sup>3</sup> ) | Gross weight | Unidades lote |
|-----------|--------------------------|------------|---------------------------|--------------|---------------|
| 1004270   | TEE 90° PPFV F/TH 1/2"   | 0,029192   | 0,02243                   | 6,326        | 200           |
| 1004271   | TEE 90° PPFV F/TH 3/4"   | 0,02874    | 0,03129                   | 6,321        | 200           |
| 1004272   | TEE 90° PPFV F/TH 1"     | 0,0609     | 0,03129                   | 6,663        | 100           |
| 1004273   | TEE 90° PPFV F/TH 1 1/4" | 0,113      | 0,03129                   | 6,217        | 50            |
| 1004274   | TEE 90° PPFV F/TH 1 1/2" | 0,1554     | 0,03682                   | 8,397        | 50            |
| 1004275   | TEE 90° PPFV F/TH 2"     | 0,223832   | 0,03682                   | 6,145        | 25            |





## ITEM 902 | Tee female thread

| Código | A      | Peso (g) | B  | C   | PN   | TIPO ROSCA |
|--------|--------|----------|----|-----|------|------------|
| 04270  | 1/2"   | 28       | 18 | 64  | PN10 | BSP        |
| 04271  | 3/4"   | 39       | 19 | 68  | PN10 | BSP        |
| 04272  | 1"     | 61       | 21 | 81  | PN10 | BSP        |
| 04273  | 1 1/4" | 114      | 25 | 96  | PN10 | BSP        |
| 04274  | 1 1/2" | 157      | 25 | 108 | PN10 | BSP        |
| 04275  | 2"     | 205      | 30 | 130 | PN10 | BSP        |



## Product Documents



## Product Certificates



## Company Certificates

