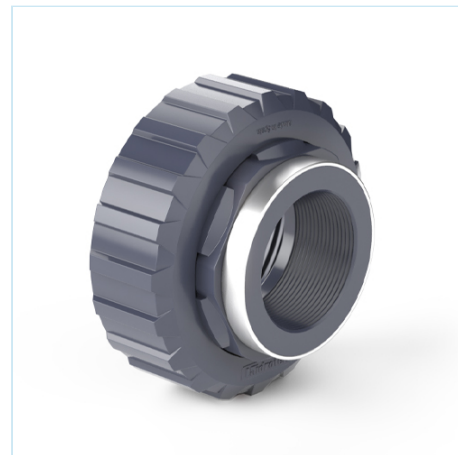




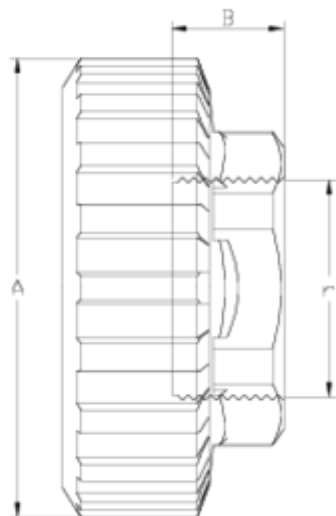
Recambios

Salida rosca hembra reforzada ITEM 641



| REFERENCIA | DESCRIPCIÓN | Peso neto | Volumen (m ³) | Peso bruto | Unidades lote |
|------------|--|-----------|---------------------------|------------|---------------|
| 111D831 | SALIDA V.E. BIDIRECCIONAL R/H 1/2" REF | 0,0761 | 0,00892 | 4,7534 | 60 |
| 111D832 | SALIDA V.E. BIDIRECCIONAL R/H 3/4" REF | 0,064 | 0,00892 | 2,7474 | 40 |
| 111D833 | SALIDA V.E. BIDIRECCIONAL R/H 1" REF | 0,0901 | 0,00892 | 5,5934 | 60 |
| 111D834 | SALIDA V.E. BIDIRECCIONAL R/H 1 1/4" REF | 0,148 | 0,00892 | 4,3314 | 28 |
| 111D835 | SALIDA V.E. BIDIRECCIONAL R/H 1 1/2" REF | 0,2463 | 0,01553 | 7,7157 | 30 |
| 111D836 | SALIDA V.E. BIDIRECCIONAL R/H 2" REF | 0,3496 | 0,02244 | 8,879 | 24 |
| 111D837 | SALIDA V.E. BIDIRECCIONAL R/H 2 1/2" REF | 0,6185 | 0,01553 | 2,8007 | 4 |
| 111D838 | SALIDA V.E. BIDIRECCIONAL R/H 3" REF | 0,993325 | 0,01553 | 4,3 | 4 |





ITEM 641 | Salida rosca hembra reforzada

| CÓDIGO | r | PESO (g) | DN | A | B | PN | TIPO ROSCA |
|--------|--------|----------|----|-----|----|------|------------|
| 11D831 | 1/2" | 49 | 15 | 55 | 17 | PN16 | BSP |
| 11D832 | 3/4" | 69 | 20 | 62 | 20 | PN16 | BSP |
| 11D833 | 1" | 93 | 25 | 72 | 23 | PN16 | BSP |
| 11D834 | 1 1/4" | 160 | 32 | 88 | 26 | PN16 | BSP |
| 11D835 | 1 1/2" | 251 | 40 | 103 | 33 | PN16 | BSP |
| 11D836 | 2" | 405 | 50 | 120 | 29 | PN16 | BSP |
| 11D837 | 2 1/2" | 620 | 65 | 150 | 33 | PN10 | BSP |
| 11D838 | 3" | 1115 | 80 | 181 | 36 | PN10 | BSP |



Documentación de Producto



Certificados de Producto

Certificados de Empresa

