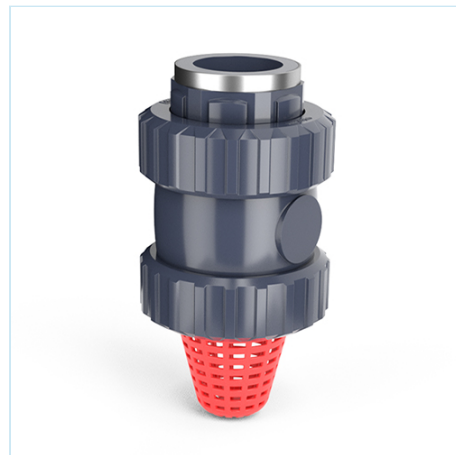


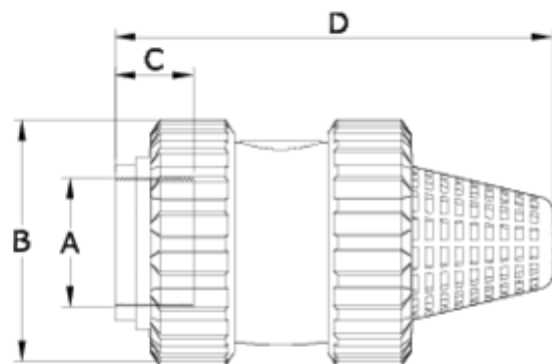


Vannes anti-retour à ressort

Sortie taraudée renforcée - pied - Joint FPM ITEM 601

| RÉFÉRENCE | DESCRIPTION | Poids net | Volume (m ³) | Poids brut | Unités par lot |
|-----------|---------------------------------------|-----------|--------------------------|------------|----------------|
| 1016730 | V ANTIRET PIE VITON S/ R/H REF 1/2" | 0,128 | 0,01553 | 5,36 | 40 |
| 1016731 | V ANTIRET PIE VITON S/ R/H REF 3/4" | 0,161 | 0,02244 | 6,98 | 40 |
| 1016732 | V ANTIRET PIE VITON S/ R/H REF 1" | 0,2655 | 0,02244 | 8,505 | 30 |
| 1016733 | V ANTIRET PIE VITON S/ R/H REF 1 1/4" | 0,45 | 0,03129 | 9,56 | 20 |
| 1016734 | V ANTIRET PIE VITON S/ R/H REF 1 1/2" | 0,682 | 0,02244 | 8,724 | 12 |
| 1016735 | V ANTIRET PIE VITON S/ R/H REF 2" | 1,075 | 0,02244 | 13,44 | 12 |
| 1016736 | V ANTIRET PIE VITON S/ R/H REF 2 1/2" | 2,201 | 0,03129 | 9,376 | 4 |
| 1016737 | V ANTIRET PIE VITON S/ R/H REF 3" | 3,805 | 0,03129 | 8,17 | 2 |





ITEM 601 | Sortie taraudée renforcée - pied - Joint FPM

| Código Vitón | A | Peso | B | C | D | PN | TIPO ROSCA |
|--------------|--------|------|-----|----|-----|------|------------|
| 16730 | 1/2" | 137 | 52 | 16 | 106 | PN16 | BSP |
| 16731 | 3/4" | 175 | 59 | 17 | 118 | PN16 | BSP |
| 16732 | 1" | 285 | 69 | 21 | 147 | PN16 | BSP |
| 16733 | 1 1/4" | 462 | 85 | 23 | 164 | PN16 | BSP |
| 16734 | 1 1/2" | 700 | 99 | 31 | 175 | PN16 | BSP |
| 16735 | 2" | 1096 | 116 | 38 | 200 | PN16 | BSP |
| 16736 | 2 1/2" | 2425 | 150 | 44 | 260 | PN10 | BSP |
| 16737 | 3" | 4150 | 178 | 52 | 303 | PN10 | BSP |





Documentation Produit



Certifications de produits

Certificats d'entreprise

